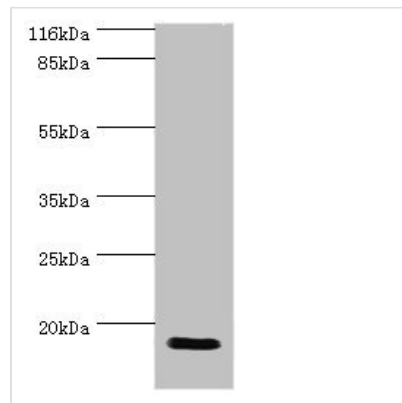




JPT1 Antibody

Product Code	CSB-PA890732HA01HU
Storage	Upon receipt, store at -20°C or -80°C. Avoid repeated freeze.
Uniprot No.	Q9UK76
Immunogen	Recombinant Human Jupiter microtubule associated homolog 1 protein (2-154AA)
Raised In	Rabbit
Species Reactivity	Human, Rat
Tested Applications	ELISA, WB; Recommended dilution: WB:1:1000-1:5000
Form	Liquid
Conjugate	Non-conjugated
Storage Buffer	Preservative: 0.03% Proclin 300 Constituents: 50% Glycerol, 0.01M PBS, PH 7.4
Purification Method	>95%, Protein G purified
Isotype	IgG
Clonality	Polyclonal
Alias	Jupiter microtubule associated homolog 1 (Androgen-regulated protein 2) (Hematological and neurological expressed 1 protein) [Cleaved into: Jupiter microtubule associated homolog 1, N-terminally processed], JPT1, ARM2 HN1
Species	Human
Research Area	Cell Biology
Target Names	JPT1

Image



Western blot

All lanes: Hematological and neurological expressed 1 antibody at 2µg/ml + Rat gonad tissue

Secondary

Goat polyclonal to rabbit IgG at 1/10000 dilution

Predicted band size: 17, 20, 12 kDa

Observed band size: 17 kDa