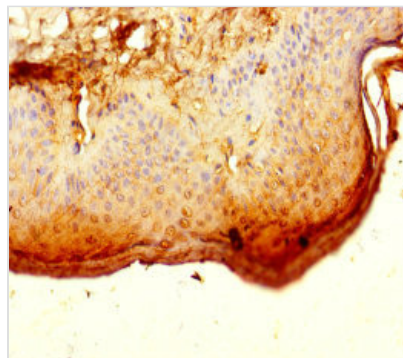




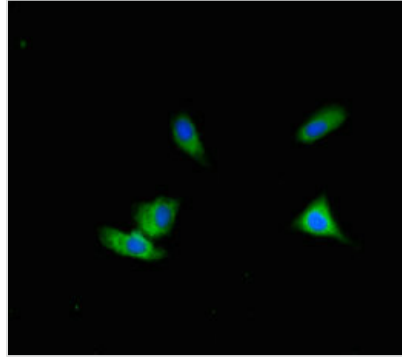
# ALG12 Antibody

<b>Product Code</b>	CSB-PA887130LA01HU
<b>Storage</b>	Upon receipt, store at -20°C or -80°C. Avoid repeated freeze.
<b>Uniprot No.</b>	Q9BV10
<b>Immunogen</b>	Recombinant Human Dol-P-Man:Man (7)GlcNAc (2)-PP-Dol alpha-1,6-mannosyltransferase protein (367-422AA)
<b>Raised In</b>	Rabbit
<b>Species Reactivity</b>	Human
<b>Tested Applications</b>	ELISA, IHC, IF; Recommended dilution: IHC:1:20-1:200, IF:1:50-1:200
<b>Relevance</b>	Adds the eighth mannose residue in an alpha-1,6 linkage onto the dolichol-PP-oligosaccharide precursor (dolichol-PP-Man(7)GlcNAc(2)) required for protein glycosylation.
<b>Form</b>	Liquid
<b>Conjugate</b>	Non-conjugated
<b>Storage Buffer</b>	Preservative: 0.03% Proclin 300 Constituents: 50% Glycerol, 0.01M PBS, PH 7.4
<b>Purification Method</b>	>95%, Protein G purified
<b>Isotype</b>	IgG
<b>Clonality</b>	Polyclonal
<b>Alias</b>	Dol-P-Man:Man(7)GlcNAc(2)-PP-Dol alpha-1,6-mannosyltransferase (EC 2.4.1.260) (Asparagine-linked glycosylation protein 12 homolog) (hALG12) (Dolichyl-P-Man:Man(7)GlcNAc(2)-PP-dolichyl-alpha-1,6-mannosyltransferase) (Mannosyltransferase ALG12 homolog) (Membrane protein SB87), ALG12
<b>Species</b>	Human
<b>Research Area</b>	Signal Transduction
<b>Target Names</b>	ALG12

## Image



Immunohistochemistry of paraffin-embedded human skin tissue using CSB-PA887130LA01HU at dilution of 1:100



Immunofluorescent analysis of HeLa cells using CSB-PA887130LA01HU at dilution of 1:100 and Alexa Fluor 488-conjugated AffiniPure Goat Anti-Rabbit IgG(H+L)