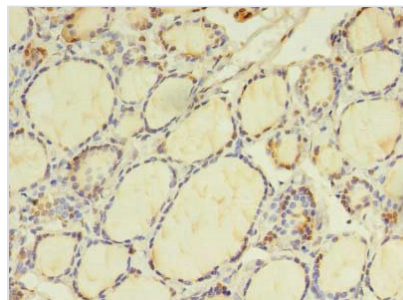




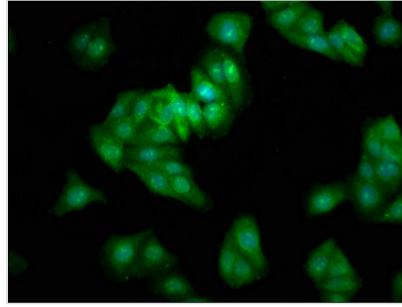
BEX2 Antibody

Product Code	CSB-PA883628LA01HU
Storage	Upon receipt, store at -20°C or -80°C. Avoid repeated freeze.
Uniprot No.	Q9BXY8
Immunogen	Recombinant Human Protein BEX2 protein (1-128AA)
Raised In	Rabbit
Species Reactivity	Human
Tested Applications	ELISA, IHC, IF; Recommended dilution: IHC:1:20-1:200, IF:1:50-1:500
Relevance	Regulator of mitochondrial apoptosis and G1 cell cycle in breast cancer. Protects the breast cancer cells against mitochondrial apoptosis and this effect is mediated through the modulation of BCL2 protein family, which involves the positive regulation of anti-apoptotic member BCL2 and the negative regulation of pro-apoptotic members BAD, BAK1 and PUMA. Required for the normal cell cycle progression during G1 in breast cancer cells through the regulation of CCND1 and CDKN1A. Regulates the level of PP2A regulatory subunit B and PP2A phosphatase activity.
Form	Liquid
Conjugate	Non-conjugated
Storage Buffer	Preservative: 0.03% Proclin 300 Constituents: 50% Glycerol, 0.01M PBS, PH 7.4
Purification Method	>95%, Protein G purified
Isotype	IgG
Clonality	Polyclonal
Alias	Protein BEX2 (Brain-expressed X-linked protein 2) (hBex2), BEX2
Species	Human
Research Area	Others
Target Names	BEX2

Image



Immunohistochemistry of paraffin-embedded human thyroid tissue using CSB-PA883628LA01HU at dilution of 1:100



Immunofluorescence staining of HepG2 cells with CSB-PA883628LA01HU at 1:333, counter-stained with DAPI. The cells were fixed in 4% formaldehyde, permeabilized using 0.2% Triton X-100 and blocked in 10% normal Goat Serum. The cells were then incubated with the antibody overnight at 4°C. The secondary antibody was Alexa Fluor 488-conjugated AffiniPure Goat Anti-Rabbit IgG(H+L).