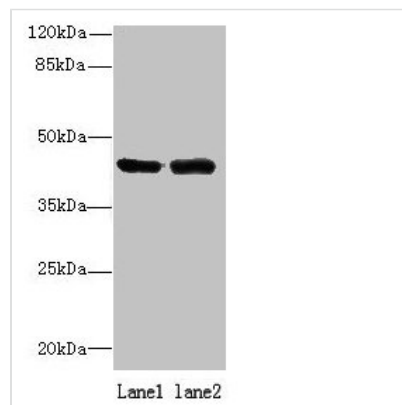




NIF3L1 Antibody

Product Code	CSB-PA880926LA01HU
Storage	Upon receipt, store at -20°C or -80°C. Avoid repeated freeze.
Uniprot No.	Q9GZT8
Immunogen	Recombinant Human NIF3-like protein 1 protein (1-377AA)
Raised In	Rabbit
Species Reactivity	Human
Tested Applications	ELISA, WB, IHC; Recommended dilution: WB:1:500-1:2000, IHC:1:20-1:200
Relevance	May function as a transcriptional corepressor through its interaction with COPS2, negatively regulating the expression of genes involved in neuronal differentiation.
Form	Liquid
Conjugate	Non-conjugated
Storage Buffer	Preservative: 0.03% Proclin 300 Constituents: 50% Glycerol, 0.01M PBS, PH 7.4
Purification Method	>95%, Protein G purified
Isotype	IgG
Clonality	Polyclonal
Alias	NIF3-like protein 1 (Amyotrophic lateral sclerosis 2 chromosomal region candidate gene 1 protein), NIF3L1, ALS2CR1
Species	Human
Research Area	Neuroscience
Target Names	NIF3L1

Image



Western blot

All lanes: NIF3L1 antibody at 0.2µg/ml

Lane 1: 293T whole cell lysate

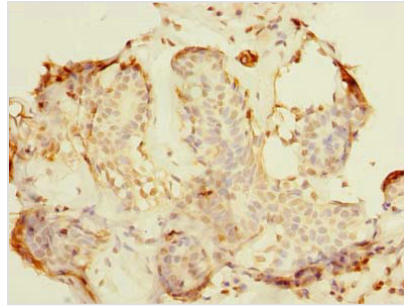
Lane 2: MDA-MB-231 whole cell lysate

Secondary

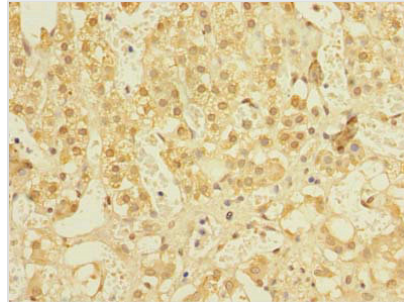
Goat polyclonal to rabbit IgG at 1/10000 dilution

Predicted band size: 42, 39, 33 kDa

Observed band size: 42 kDa



Immunohistochemistry of paraffin-embedded human breast cancer using CSB-PA880926LA01HU at dilution of 1:100



Immunohistochemistry of paraffin-embedded human adrenal gland tissue using CSB-PA880926LA01HU at dilution of 1:100