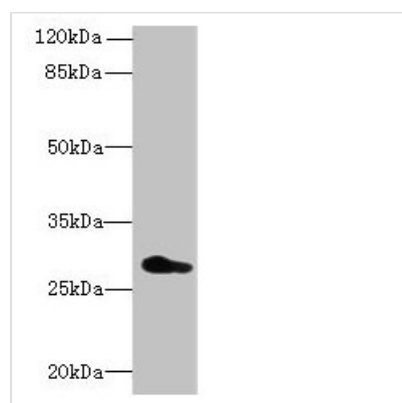




# REEP4 Antibody

<b>Product Code</b>	CSB-PA875682LA01HU
<b>Storage</b>	Upon receipt, store at -20°C or -80°C. Avoid repeated freeze.
<b>Uniprot No.</b>	Q9H6H4
<b>Immunogen</b>	Recombinant Human Receptor expression-enhancing protein 4 protein (78-257AA)
<b>Raised In</b>	Rabbit
<b>Species Reactivity</b>	Human
<b>Tested Applications</b>	ELISA, WB, IHC, IF; Recommended dilution: WB:1:500-1:2000, IHC:1:20-1:200, IF:1:50-1:200
<b>Relevance</b>	Microtubule-binding protein required to ensure proper cell division and nuclear envelope reassembly by sequestering the endoplasmic reticulum away from chromosomes during mitosis. Probably acts by clearing the endoplasmic reticulum membrane from metaphase chromosomes.
<b>Form</b>	Liquid
<b>Conjugate</b>	Non-conjugated
<b>Storage Buffer</b>	Preservative: 0.03% Proclin 300 Constituents: 50% Glycerol, 0.01M PBS, PH 7.4
<b>Purification Method</b>	Antigen Affinity Purified
<b>Isotype</b>	IgG
<b>Clonality</b>	Polyclonal
<b>Alias</b>	Receptor expression-enhancing protein 4, REEP4, C8orf20
<b>Species</b>	Human
<b>Research Area</b>	Others
<b>Target Names</b>	REEP4

## Image



### Western blot

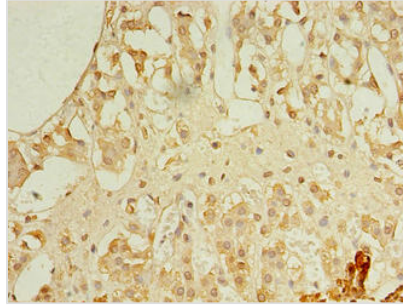
All lanes: REEP4 antibody at 0.7µg/ml + U251 whole cell lysate

Secondary

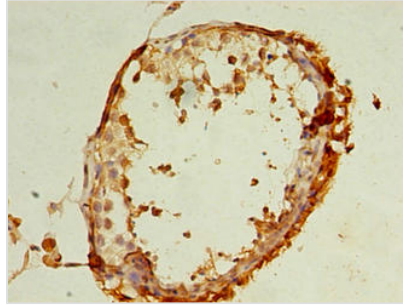
Goat polyclonal to rabbit IgG at 1/10000 dilution

Predicted band size: 30, 20 kDa

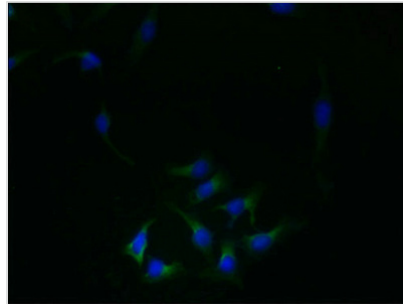
Observed band size: 30 kDa



Immunohistochemistry of paraffin-embedded human adrenal gland tissue using CSB-PA875682LA01HU at dilution of 1:100



Immunohistochemistry of paraffin-embedded human testis tissue using CSB-PA875682LA01HU at dilution of 1:100



Immunofluorescent analysis of HeLa cells using CSB-PA875682LA01HU at dilution of 1:100 and Alexa Fluor 488-conjugated AffiniPure Goat Anti-Rabbit IgG(H+L)