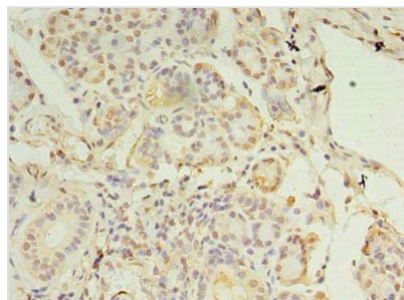




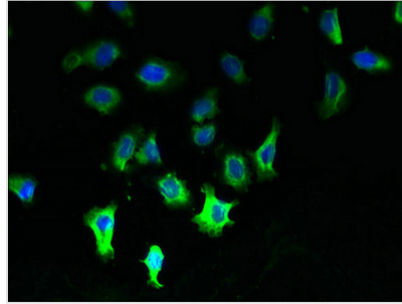
# MCUB Antibody

<b>Product Code</b>	CSB-PA873671LA01HU
<b>Storage</b>	Upon receipt, store at -20°C or -80°C. Avoid repeated freeze.
<b>Uniprot No.</b>	Q9NWR8
<b>Immunogen</b>	Recombinant Human Calcium uniporter regulatory subunit MCUB, mitochondrial protein (89-219AA)
<b>Raised In</b>	Rabbit
<b>Species Reactivity</b>	Human
<b>Tested Applications</b>	ELISA, IHC, IF; Recommended dilution: IHC:1:20-1:200, IF:1:50-1:200
<b>Relevance</b>	Negatively regulates the activity of MCU, the mitochondrial inner membrane calcium uniporter, and thereby modulates calcium uptake into the mitochondrion. Does not form functional calcium channels by itself. Mitochondrial calcium homeostasis plays key roles in cellular physiology and regulates cell bioenergetics, cytoplasmic calcium signals and activation of cell death pathways.
<b>Form</b>	Liquid
<b>Conjugate</b>	Non-conjugated
<b>Storage Buffer</b>	Preservative: 0.03% Proclin 300 Constituents: 50% Glycerol, 0.01M PBS, PH 7.4
<b>Purification Method</b>	Antigen Affinity Purified
<b>Isotype</b>	IgG
<b>Clonality</b>	Polyclonal
<b>Alias</b>	Calcium uniporter regulatory subunit MCUB, mitochondrial (MCUB) (Coiled-coil domain-containing protein 109B), MCUB, CCDC109B
<b>Species</b>	Human
<b>Research Area</b>	Others
<b>Target Names</b>	MCUB

## Image



Immunohistochemistry of paraffin-embedded human pancreatic tissue using CSB-PA873671LA01HU at dilution of 1:100



Immunofluorescent analysis of A549 cells using CSB-PA873671LA01HU at dilution of 1:100 and Alexa Fluor 488-conjugated AffiniPure Goat Anti-Rabbit IgG(H+L)