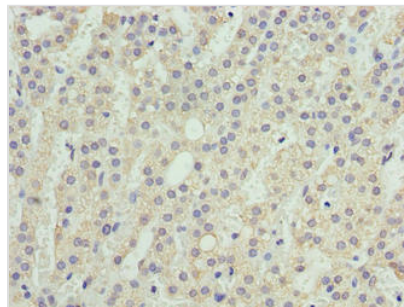




SEC16B Antibody

Product Code	CSB-PA853439LA01HU
Storage	Upon receipt, store at -20°C or -80°C. Avoid repeated freeze.
Uniprot No.	Q96JE7
Immunogen	Recombinant Human Protein transport protein Sec16B protein (5-304AA)
Raised In	Rabbit
Species Reactivity	Human
Tested Applications	ELISA, IHC; Recommended dilution: IHC:1:20-1:200
Relevance	Required for secretory cargo traffic from the endoplasmic reticulum to the Golgi apparatus and for normal transitional endoplasmic reticulum (tER) organization.
Form	Liquid
Conjugate	Non-conjugated
Storage Buffer	Preservative: 0.03% Proclin 300 Constituents: 50% Glycerol, 0.01M PBS, PH 7.4
Purification Method	>95%, Protein G purified
Isotype	IgG
Clonality	Polyclonal
Alias	Protein transport protein Sec16B (Leucine zipper transcription regulator 2) (Regucalcin gene promoter region-related protein p117) (RGPR-p117) (SEC16 homolog B), SEC16B, KIAA1928 LZTR2 RGPR SEC16S
Species	Homo sapiens (Human)
Research Area	Signal Transduction
Target Names	SEC16B

Image



Immunohistochemistry of paraffin-embedded human adrenal gland tissue using CSB-PA853439LA01HU at dilution of 1:100