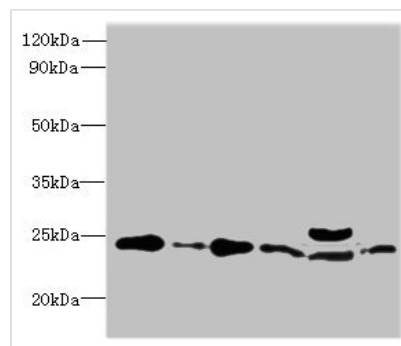




RPL10L Antibody

Product Code	CSB-PA850330LA01HU
Storage	Upon receipt, store at -20°C or -80°C. Avoid repeated freeze.
Uniprot No.	Q96L21
Immunogen	Recombinant Human 60S ribosomal protein L10-like protein (1-214AA)
Raised In	Rabbit
Species Reactivity	Human, Mouse
Tested Applications	ELISA, WB, IHC; Recommended dilution: WB:1:500-1:2000, IHC:1:20-1:200
Relevance	May play a role in compensating for the inactivated X-linked gene during spermatogenesis.
Form	Liquid
Conjugate	Non-conjugated
Storage Buffer	Preservative: 0.03% Proclin 300 Constituents: 50% Glycerol, 0.01M PBS, PH 7.4
Purification Method	>95%, Protein G purified
Isotype	IgG
Clonality	Polyclonal
Alias	60S ribosomal protein L10-like (Large ribosomal subunit protein uL16-like), RPL10L
Species	Human
Research Area	Others
Target Names	RPL10L

Image



Western blot

All lanes: RPL10L antibody at 4µg/ml

Lane 1: Jurkat whole cell lysate

Lane 2: HeLa whole cell lysate

Lane 3: HL60 whole cell lysate

Lane 4: K562 whole cell lysate

Lane 5: Mouse liver tissue

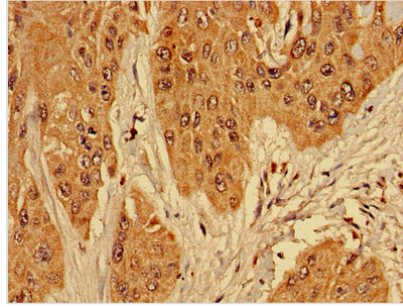
Lane 6: MCF-7 whole cell lysate

Secondary

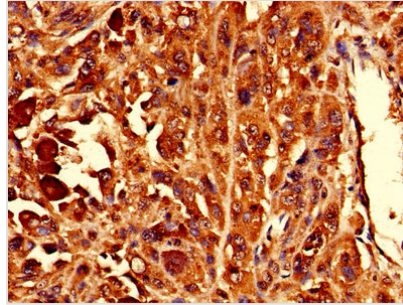
Goat polyclonal to Rabbit IgG at 1/10000 dilution

Predicted band size: 25 kDa

Observed band size: 25 kDa



Immunohistochemistry of paraffin-embedded human cervical cancer using CSB-PA850330LA01HU at dilution of 1:100



Immunohistochemistry of paraffin-embedded human melanoma using CSB-PA850330LA01HU at dilution of 1:100