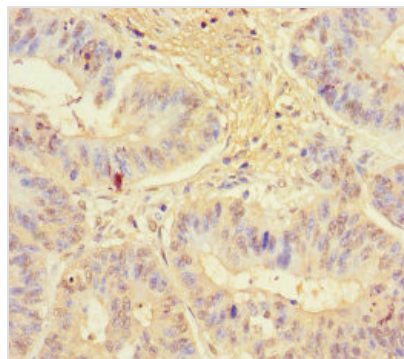




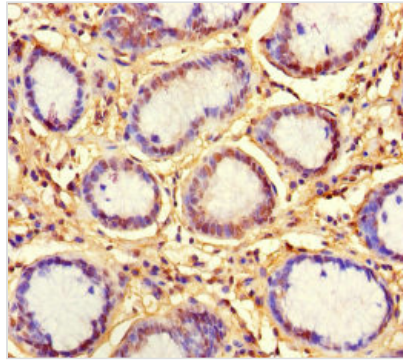
# KLRG1 Antibody

<b>Product Code</b>	CSB-PA846610LA01HU
<b>Storage</b>	Upon receipt, store at -20°C or -80°C. Avoid repeated freeze.
<b>Uniprot No.</b>	Q96E93
<b>Immunogen</b>	Recombinant Human Killer cell lectin-like receptor subfamily G member 1 protein (60-195AA)
<b>Raised In</b>	Rabbit
<b>Species Reactivity</b>	Human
<b>Tested Applications</b>	ELISA, IHC; Recommended dilution: IHC:1:20-1:200
<b>Relevance</b>	Plays an inhibitory role on natural killer (NK) cells and T-cell functions upon binding to their non-MHC ligands. May mediate missing self recognition by binding to a highly conserved site on classical cadherins, enabling it to monitor expression of E-cadherin/CDH1, N-cadherin/CDH2 and R-cadherin/CDH4 on target cells.
<b>Form</b>	Liquid
<b>Conjugate</b>	Non-conjugated
<b>Storage Buffer</b>	Preservative: 0.03% Proclin 300 Constituents: 50% Glycerol, 0.01M PBS, PH 7.4
<b>Purification Method</b>	>95%, Protein G purified
<b>Isotype</b>	IgG
<b>Clonality</b>	Polyclonal
<b>Alias</b>	Killer cell lectin-like receptor subfamily G member 1 (C-type lectin domain family 15 member A) (ITIM-containing receptor MAFA-L) (MAFA-like receptor) (Mast cell function-associated antigen), KLRG1, CLEC15A MAFA MAFAL
<b>Species</b>	Human
<b>Research Area</b>	Immunology
<b>Target Names</b>	KLRG1

## Image



Immunohistochemistry of paraffin-embedded human colon cancer using CSB-PA846610LA01HU at dilution of 1:100



Immunohistochemistry of paraffin-embedded human gastric cancer using CSB-PA846610LA01HU at dilution of 1:100