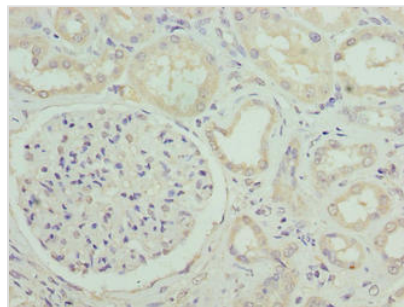




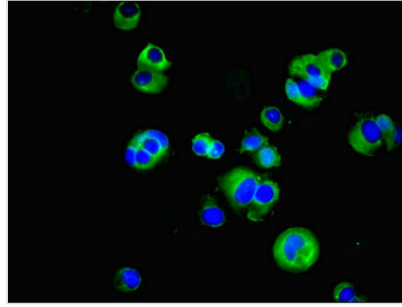
# SUSD6 Antibody

|                            |  |
|----------------------------|--|
| <b>Product Code</b>        | CSB-PA835675LA01HU   |
| <b>Storage</b>             | Upon receipt, store at -20°C or -80°C. Avoid repeated freeze.  |
| <b>Uniprot No.</b>         | Q92537   |
| <b>Immunogen</b>           | Recombinant Human Sushi domain-containing protein 6 protein (144-303AA)  |
| <b>Raised In</b>           | Rabbit   |
| <b>Species Reactivity</b>  | Human  |
| <b>Tested Applications</b> | ELISA, IHC, IF; Recommended dilution: IHC:1:20-1:200, IF:1:50-1:200  |
| <b>Relevance</b>           | May play a role in growth-suppressive activity and cell death (PubMed:24652652). May be involved in the production of chemokine molecules in umbilical vein endothelial cells (HUVECs) cultured in THP1 monocyte LPS-induced medium (PubMed:20236627). Plays a role in preventing tumor onset. |
| <b>Form</b>                | Liquid   |
| <b>Conjugate</b>           | Non-conjugated   |
| <b>Storage Buffer</b>      | Preservative: 0.03% Proclin 300<br>Constituents: 50% Glycerol, 0.01M PBS, PH 7.4   |
| <b>Purification Method</b> | >95%, Protein G purified   |
| <b>Isotype</b>             | IgG  |
| <b>Clonality</b>           | Polyclonal   |
| <b>Alias</b>               | Sushi domain-containing protein 6 (Drug-activated gene overexpressed protein), SUSD6, DRAGO KIAA0247   |
| <b>Species</b>             | Human  |
| <b>Research Area</b>       | Others   |
| <b>Target Names</b>        | SUSD6  |

## Image



Immunohistochemistry of paraffin-embedded human kidney tissue using CSB-PA835675LA01HU at dilution of 1:100



Immunofluorescent analysis of MCF-7 cells using CSB-PA835675LA01HU at dilution of 1:100 and Alexa Fluor 488-conjugated AffiniPure Goat Anti-Rabbit IgG(H+L)