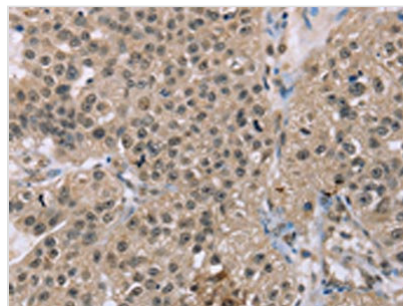




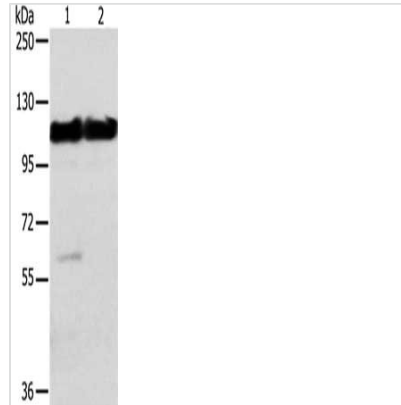
# ACTN2 Antibody

|                            |  |
|----------------------------|--|
| <b>Product Code</b>        | CSB-PA828857   |
| <b>Storage</b>             | Upon receipt, store at -20°C or -80°C. Avoid repeated freeze.  |
| <b>Uniprot No.</b>         | P35609   |
| <b>Immunogen</b>           | Synthetic peptide of Human ACTN2   |
| <b>Raised In</b>           | Rabbit   |
| <b>Species Reactivity</b>  | Human, Mouse   |
| <b>Tested Applications</b> | ELISA, WB, IHC; ELISA: 1:2000-1:10000, WB: 1:1000-1:5000, IHC: 1:25-1:100  |
| <b>Relevance</b>           | Alpha actinins belong to the spectrin gene superfamily which represents a diverse group of cytoskeletal proteins, including the alpha and beta spectrins and dystrophins. Alpha actinin is an actin-binding protein with multiple roles in different cell types. In nonmuscle cells, the cytoskeletal isoform is found along microfilament bundles and adherens-type junctions, where it is involved in binding actin to the membrane. In contrast, skeletal, cardiac, and smooth muscle isoforms are localized to the Z-disc and analogous dense bodies, where they help anchor the myofibrillar actin filaments. |
| <b>Form</b>                | Liquid   |
| <b>Conjugate</b>           | Non-conjugated   |
| <b>Storage Buffer</b>      | -20°C, pH7.4 PBS, 0.05% NaN <sub>3</sub> , 40% Glycerol  |
| <b>Purification Method</b> | Antigen affinity purification  |
| <b>Isotype</b>             | IgG  |
| <b>Species</b>             | Homo sapiens (Human)   |
| <b>Target Names</b>        | ACTN2  |

## Image



The image on the left is immunohistochemistry of paraffin-embedded Human breast cancer tissue using CSB-PA828857 (ACTN2 Antibody) at dilution 1/30, on the right is treated with synthetic peptide. (Original magnification: x200)



Gel: 6%SDS-PAGE, Lysate: 40  $\mu$ g, Lane 1-2:  
Mouse heart tissue, Mouse muscle tissue,  
Primary antibody: CSB-PA828857(ACTN2  
Antibody) at dilution 1/200, Secondary antibody:  
Goat anti rabbit IgG at 1/8000 dilution, Exposure  
time: 20 seconds