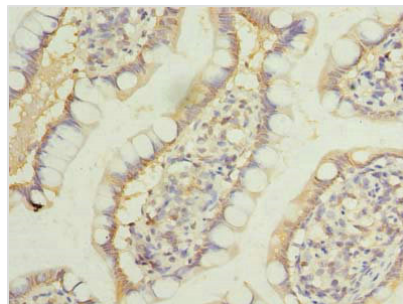




LRRC39 Antibody

Product Code	CSB-PA822195LA01HU
Storage	Upon receipt, store at -20°C or -80°C. Avoid repeated freeze.
Uniprot No.	Q96DD0
Immunogen	Recombinant Human Leucine-rich repeat-containing protein 39 protein (1-335AA)
Raised In	Rabbit
Species Reactivity	Human
Tested Applications	ELISA, IHC; Recommended dilution: IHC:1:20-1:200
Form	Liquid
Conjugate	Non-conjugated
Storage Buffer	Preservative: 0.03% Proclin 300 Constituents: 50% Glycerol, 0.01M PBS, PH 7.4
Purification Method	>95%, Protein G purified
Isotype	IgG
Clonality	Polyclonal
Alias	Leucine-rich repeat-containing protein 39 (Myosin-interacting M-band-associated stress-responsive protein) (Myomasp), LRRC39
Species	Homo sapiens (Human)
Research Area	Cell Biology
Target Names	LRRC39

Image



Immunohistochemistry of paraffin-embedded human small intestine tissue using CSB-PA822195LA01HU at dilution of 1:100