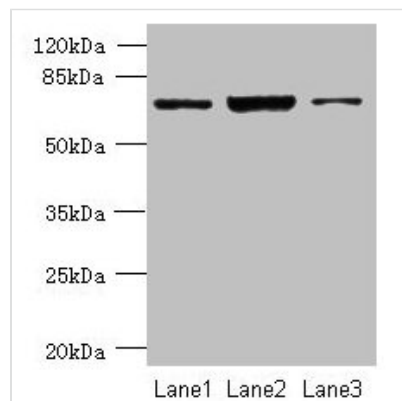




# CCDC116 Antibody

<b>Product Code</b>	CSB-PA812904LA01HU
<b>Storage</b>	Upon receipt, store at -20°C or -80°C. Avoid repeated freeze.
<b>Uniprot No.</b>	Q8IYX3
<b>Immunogen</b>	Recombinant Human Coiled-coil domain-containing protein 116 protein (1-300AA)
<b>Raised In</b>	Rabbit
<b>Species Reactivity</b>	Human
<b>Tested Applications</b>	ELISA, WB, IHC; Recommended dilution: WB:1:500-1:2000, IHC:1:20-1:200
<b>Form</b>	Liquid
<b>Conjugate</b>	Non-conjugated
<b>Storage Buffer</b>	Preservative: 0.03% Proclin 300 Constituents: 50% Glycerol, 0.01M PBS, PH 7.4
<b>Purification Method</b>	Antigen Affinity Purified
<b>Isotype</b>	IgG
<b>Clonality</b>	Polyclonal
<b>Alias</b>	Coiled-coil domain-containing protein 116, CCDC116
<b>Species</b>	Human
<b>Research Area</b>	Others
<b>Target Names</b>	CCDC116

## Image



### Western blot

All lanes: CCDC116 antibody at 1.5µg/ml

Lane 1: SH-SY5Y whole cell lysate

Lane 2: Hela whole cell lysate

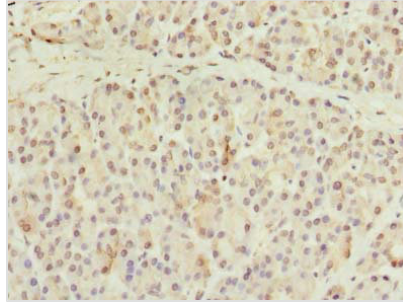
Lane 3: HCT116 whole cell lysate

Secondary

Goat polyclonal to rabbit IgG at 1/10000 dilution

Predicted band size: 68, 57, 58 kDa

Observed band size: 68 kDa



Immunohistochemistry of paraffin-embedded human pancreatic tissue using CSB-PA812904LA01HU at dilution of 1:100