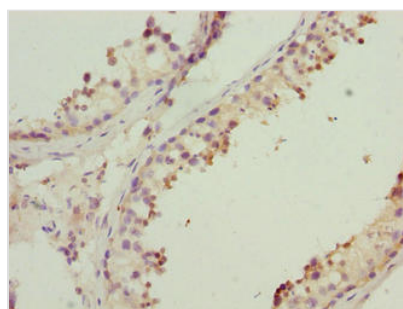




MRPL41 Antibody

Product Code	CSB-PA811620LA01HU
Storage	Upon receipt, store at -20°C or -80°C. Avoid repeated freeze.
Uniprot No.	Q8IXM3
Immunogen	Recombinant Human 39S ribosomal protein L41, mitochondrial protein (14-137AA)
Raised In	Rabbit
Species Reactivity	Human
Tested Applications	ELISA, IHC; Recommended dilution: IHC:1:20-1:200
Relevance	Component of the mitochondrial ribosome large subunit. Also involved in apoptosis and cell cycle. Enhances p53/TP53 stability, thereby contributing to p53/TP53-induced apoptosis in response to growth-inhibitory condition. Enhances p53/TP53 translocation to the mitochondria. Has the ability to arrest the cell cycle at the G1 phase, possibly by stabilizing the CDKN1A and CDKN1B (p27Kip1) proteins.
Form	Liquid
Conjugate	Non-conjugated
Storage Buffer	Preservative: 0.03% Proclin 300 Constituents: 50% Glycerol, 0.01M PBS, PH 7.4
Purification Method	>95%, Protein G purified
Isotype	IgG
Clonality	Polyclonal
Alias	39S ribosomal protein L41, mitochondrial (L41mt) (MRP-L41) (39S ribosomal protein L27 homolog) (Bcl-2-interacting mitochondrial ribosomal protein L41) (Cell proliferation-inducing gene 3 protein) (MRP-L27 homolog) (Mitochondrial large ribosomal subunit protein mL41), MRPL41, BMRP MRPL27 RPML27
Species	Homo sapiens (Human)
Research Area	Cell Biology
Target Names	MRPL41

Image



Immunohistochemistry of paraffin-embedded human testis tissue using CSB-PA811620LA01HU at dilution of 1:100