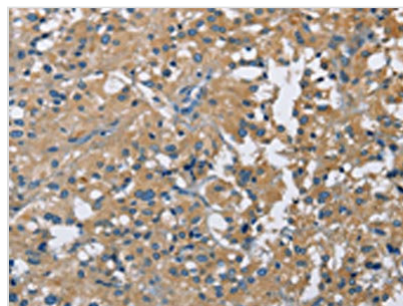




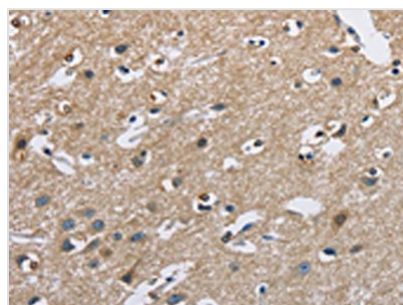
CAB39L Antibody

Product Code	CSB-PA796667
Storage	Upon receipt, store at -20°C or -80°C. Avoid repeated freeze.
Uniprot No.	Q9H9S4
Immunogen	Fusion protein of Human CAB39L
Raised In	Rabbit
Species Reactivity	Human, Mouse
Tested Applications	ELISA, WB, IHC; ELISA: 1:2000-1:5000, WB: 1:500-1:2000, IHC: 1:50-1:200
Relevance	Calcium-binding protein 39-like is a protein that in humans is encoded by the CAB39L gene. CAB39L (calcium binding protein 39-like), also known as MO25L (MO25-like) or MO2L, is a 337 amino acid protein that is similar to MO25 and is found in the serum of nearly half of all patients diagnosed with acute monocytic leukemia. This suggests a role for CAB39L in carcinogenesis.
Form	Liquid
Conjugate	Non-conjugated
Storage Buffer	-20°C, pH7.4 PBS, 0.05% NaN ₃ , 40% Glycerol
Purification Method	Antigen affinity purification
Isotype	IgG
Species	Homo sapiens (Human)
Target Names	CAB39L

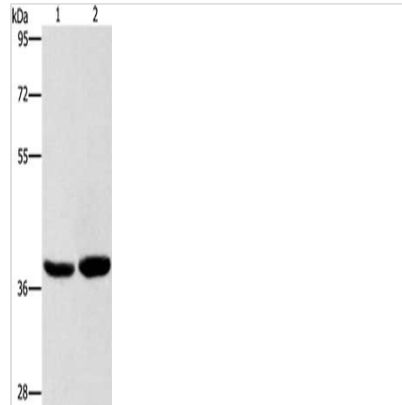
Image



The image on the left is immunohistochemistry of paraffin-embedded Human thyroid cancer tissue using CSB-PA796667(CAB39L Antibody) at dilution 1/40, on the right is treated with fusion protein. (Original magnification: ×200)



The image on the left is immunohistochemistry of paraffin-embedded Human brain tissue using CSB-PA796667(CAB39L Antibody) at dilution 1/40, on the right is treated with fusion protein. (Original magnification: ×200)



Gel: 8%SDS-PAGE, Lysate: 40 μ g, Lane 1-2:
Human fetal brain tissue, 231 cells, Primary
antibody: CSB-PA796667(CAB39L Antibody) at
dilution 1/400, Secondary antibody: Goat anti
rabbit IgG at 1/8000 dilution, Exposure time: 15
seconds