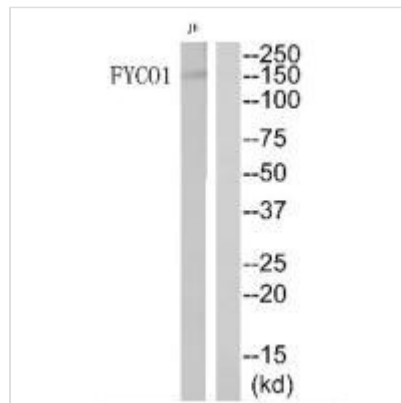




FYCO1 Antibody

Product Code	CSB-PA796500
Storage	Upon receipt, store at -20°C or -80°C. Avoid repeated freeze.
Uniprot No.	Q9BQS8
Immunogen	Synthesized peptide derived from Internal of Human FYCO1.
Raised In	Rabbit
Species Reactivity	Human
Specificity	The antibody detects endogenous levels of total FYCO1 protein.
Tested Applications	ELISA,WB;WB:1:500-1:3000
Relevance	May mediate microtubule plus end-directed vesicle transport. Kiss H., Eur. J. Hum. Genet. 10:52-61(2002). Bechtel S., BMC Genomics 8:399-399(2007). Muzny D.M., Nature 440:1194-1198(2006).
Form	Rabbit IgG in phosphate buffered saline (without Mg ²⁺ and Ca ²⁺), pH 7.4, 150mM NaCl, 0.02% sodium azide and 50% glycerol.
Purification Method	The antibody was affinity-purified from rabbit antiserum by affinity-chromatography using epitope-specific immunogen.
Clonality	Polyclonal
Alias	DKFZp779K1152; FLJ13335; FYCO1; FYVE and coiled-coil domain containing 1; FYVE and coiled-coil domain-containing protein 1
Product Type	Polyclonal Antibody
Species	Homo sapiens (Human)
Target Names	FYCO1

Image



Western blot analysis of extracts from JurKat cells, using FYCO1 antibody.