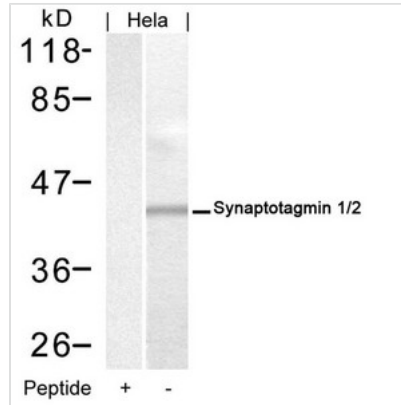


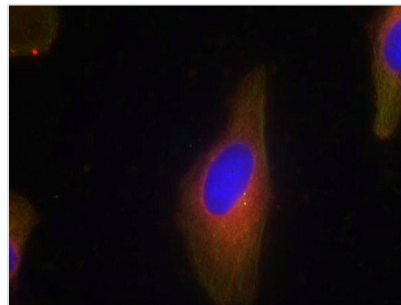


SYT1/SYT2 (Ab-202/199) Antibody

Product Code	CSB-PA792341
Storage	Upon receipt, store at -20°C or -80°C. Avoid repeated freeze.
Uniprot No.	P21579
Immunogen	Peptide sequence around aa.200~204/197~201 (R-K-T-L-N) derived from Human Synaptotagmin 1/2.
Raised In	Rabbit
Species Reactivity	Human,Mouse,Rat
Specificity	The antibody detects endogenous level of total Synaptotagmin 1/2 protein.
Tested Applications	ELISA,WB,IF;WB:1:500-1:1000,IF:1:100-1:200
Relevance	<p>The synaptotagmins are integral membrane proteins of synaptic vesicles thought to serve as Ca(2+) sensors in the process of vesicular trafficking and exocytosis. Calcium binding to synaptotagmin I participates in triggering neurotransmitter release at the synapse</p> <p>Gustavsson N, et al. Proc Natl Acad Sci U S A. 2008 Mar 11; 105(10):3992-7. Cnops L, et al. Cereb Cortex. 2008 May; 18(5):1221-31. Lynch KL, et al. Mol Biol Cell. 2007 Dec; 18(12):4957-68.</p>
Form	Supplied at 1.0mg/mL in phosphate buffered saline (without Mg ²⁺ and Ca ²⁺), pH 7.4, 150mM NaCl, 0.02% sodium azide and 50% glycerol.
Purification Method	Antibodies were produced by immunizing rabbits with synthetic peptide and KLH conjugates. Antibodies were purified by affinity-chromatography using epitope-specific peptide.
Clonality	Polyclonal
Alias	SYT1/2; SytI/II; Synaptotagmin I/II; P65; SYT
Product Type	Polyclonal Antibody
Species	Homo sapiens (Human)
Target Names	SYT1/SYT2
Image	



Western blot analysis of extracts from HeLa cells using Synaptotagmin 1/2(Ab-202/199) Antibody and the same antibody preincubated with blocking peptide.



Immunofluorescence staining of methanol-fixed HeLa cells using Synaptotagmin 1/2(Ab-202/199) Antibody.