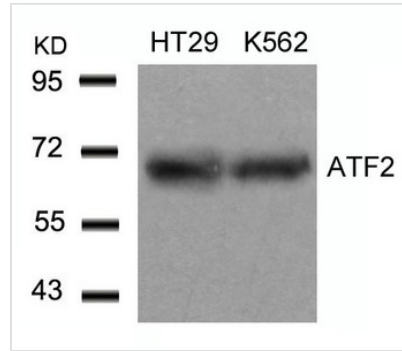


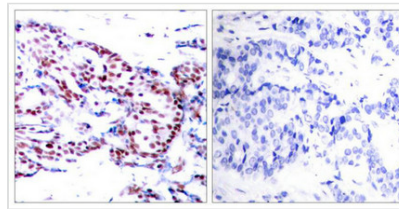


# ATF2 (Ab-71 or 53) Antibody

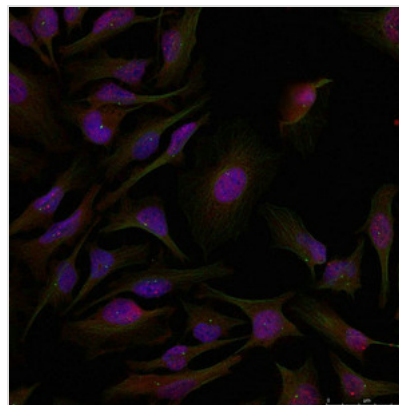
<b>Product Code</b>	CSB-PA783223
<b>Storage</b>	Upon receipt, store at -20°C or -80°C. Avoid repeated freeze.
<b>Uniprot No.</b>	P15336
<b>Immunogen</b>	Peptide sequence around aa.69~73 or 51~55 (T-P-T-P-T) derived from Human ATF2.
<b>Raised In</b>	Rabbit
<b>Species Reactivity</b>	Human,Mouse,Rat
<b>Specificity</b>	The antibody detects endogenous level of total ATF2 protein.
<b>Tested Applications</b>	ELISA,WB,IHC,IF;WB:1:500-1:1000,IHC:1:50-1:200,IF:1:100-1:200
<b>Relevance</b>	<p>Transcriptional activator, probably constitutive, which binds to the cAMP-responsive element (CRE) (consensus: 5'-GTGACGT[AC][AG]-3'), a sequence present in many viral and cellular promoters. Interaction with JUN redirects JUN to bind to CREs preferentially over the 12-O-tetradecanoylphorbol-13-acetate response elements (TRES) as part of an ATF2-c-Jun complex.</p> <p>Sevilla A, et al. (2004) J Biol Chem. 279(26):27458-27465. Waetzig G H, et al. (2002) J Immunol. 168(10): 5342-5351. Abdel-Hafiz H A, et al. (1992) Mol Endocrinol. 6: 2079-2089. Gupta S, et al. (1995) Science. 267: 389-393. Van Dam H, et al. (1995) EMBO J. 14(8): 1798-1811.</p>
<b>Form</b>	Supplied at 1.0mg/mL in phosphate buffered saline (without Mg <sup>2+</sup> and Ca <sup>2+</sup> ), pH 7.4, 150mM NaCl, 0.02% sodium azide and 50% glycerol.
<b>Purification Method</b>	Antibodies were produced by immunizing rabbits with synthetic peptide and KLH conjugates. Antibodies were purified by affinity-chromatography using epitope-specific peptide.
<b>Clonality</b>	Polyclonal
<b>Alias</b>	CREB2; CREBP1;
<b>Product Type</b>	Polyclonal Antibody
<b>Species</b>	Homo sapiens (Human)
<b>Target Names</b>	ATF2
<b>Image</b>	



Western blot analysis of extracts from HT29 and K562 cells using ATF2(Ab-71 or 53) Antibody.



Immunohistochemical analysis of paraffin-embedded human breast carcinoma tissue using ATF2(Ab-71 or 53) Antibody(left) or the same antibody preincubated with blocking peptide(right).



Immunofluorescence staining of methanol-fixed Hela cells using ATF2(Ab-71 or 53) Antibody.