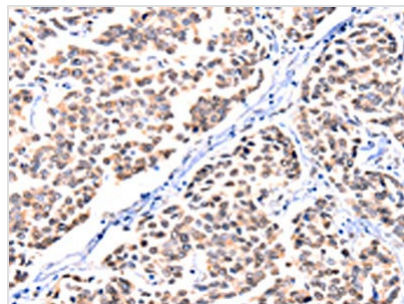




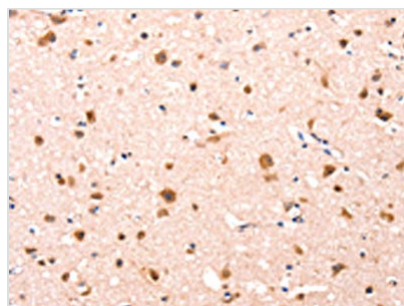
FBLN1 Antibody

Product Code	CSB-PA781017
Storage	Upon receipt, store at -20°C or -80°C. Avoid repeated freeze.
Uniprot No.	P23142
Immunogen	Synthetic peptide of Human FBLN1
Raised In	Rabbit
Species Reactivity	Human
Tested Applications	ELISA,IHC;ELISA:1:1000-1:2000,IHC:1:10-1:50
Relevance	Fibulin 1 is a secreted glycoprotein that becomes incorporated into a fibrillar extracellular matrix. Calcium-binding is apparently required to mediate its binding to laminin and nidogen. It mediates platelet adhesion via binding fibrinogen. Four splice variants which differ in the 3' end have been identified. Each variant encodes a different isoform, but no functional distinctions have been identified among the four variants.
Form	Liquid
Conjugate	Non-conjugated
Storage Buffer	-20°C, pH7.4 PBS, 0.05% NaN ₃ , 40% Glycerol
Purification Method	Antigen affinity purification
Isotype	IgG
Species	Homo sapiens (Human)
Target Names	FBLN1

Image



The image on the left is immunohistochemistry of paraffin-embedded Human breast cancer tissue using CSB-PA781017(FBLN1 Antibody) at dilution 1/12, on the right is treated with synthetic peptide. (Original magnification: x200)



The image on the left is immunohistochemistry of paraffin-embedded Human brain tissue using CSB-PA781017(FBLN1 Antibody) at dilution 1/12, on the right is treated with synthetic peptide. (Original magnification: x200)