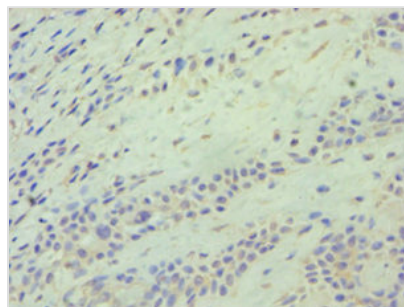




# ATG9A Antibody

<b>Product Code</b>	CSB-PA773782ESR1HU
<b>Storage</b>	Upon receipt, store at -20°C or -80°C. Avoid repeated freeze.
<b>Uniprot No.</b>	Q7Z3C6
<b>Immunogen</b>	Recombinant Human Autophagy-related protein 9A protein (180-290AA)
<b>Raised In</b>	Rabbit
<b>Species Reactivity</b>	Human
<b>Tested Applications</b>	ELISA, IHC; Recommended dilution: IHC:1:20-1:200
<b>Relevance</b>	Involved in autophagy and cytoplasm to vacuole transport (Cvt) vesicle formation. Plays a key role in the organization of the preautophagosomal structure/phagophore assembly site (PAS), the nucleating site for formation of the sequestering vesicle. Cycles between a juxta-nuclear trans-Golgi network compartment and late endosomes. Nutrient starvation induces accumulation on autophagosomes. Starvation-dependent trafficking requires ULK1, ATG13 and SUPT20H.
<b>Form</b>	Liquid
<b>Conjugate</b>	Non-conjugated
<b>Storage Buffer</b>	PBS with 0.02% sodium azide, 50% glycerol, pH7.3.
<b>Purification Method</b>	Antigen Affinity Purified
<b>Isotype</b>	IgG
<b>Clonality</b>	Polyclonal
<b>Alias</b>	Autophagy-related protein 9A (APG9-like 1) (mATG9), ATG9A, APG9L1
<b>Species</b>	Human
<b>Research Area</b>	Cell Biology
<b>Target Names</b>	ATG9A

## Image



Immunohistochemistry of paraffin-embedded human breast cancer using CSB-PA773782ESR1HU at dilution of 1:100