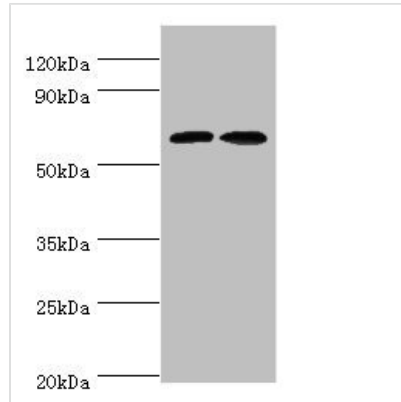




# CREB3L2 Antibody

<b>Product Code</b>	CSB-PA754617ESR2HU
<b>Storage</b>	Upon receipt, store at -20°C or -80°C. Avoid repeated freeze.
<b>Uniprot No.</b>	Q70SY1
<b>Immunogen</b>	Recombinant Human Cyclic AMP-responsive element-binding protein 3-like protein 2 protein (1-247AA)
<b>Raised In</b>	Rabbit
<b>Species Reactivity</b>	Human, Mouse
<b>Tested Applications</b>	ELISA, WB, IHC, IF; Recommended dilution: WB:1:200-1:1000, IHC:1:20-1:200, IF:1:50-1:200
<b>Relevance</b>	Transcriptional activator which is processed and activated during endoplasmic reticulum stress late phase. Binds to the cAMP response element (CRE) and activates transcription through CRE. Regulates the transcription of unfolded protein response target genes, preventing accumulation of unfolded proteins in damaged neurons. Also regulates the expression of SEC23A, accelerating protein trafficking from the ER to the Golgi thereby playing a key role in chondrocyte differentiation and formation of epiphyseal cartilage (By similarity).
<b>Form</b>	Liquid
<b>Conjugate</b>	Non-conjugated
<b>Storage Buffer</b>	PBS with 0.02% sodium azide, 50% glycerol, pH7.3.
<b>Purification Method</b>	Antigen Affinity Purified
<b>Isotype</b>	IgG
<b>Clonality</b>	Polyclonal
<b>Alias</b>	Cyclic AMP-responsive element-binding protein 3-like protein 2 (cAMP-responsive element-binding protein 3-like protein 2) (BBF2 human homolog on chromosome 7) [Cleaved into: Processed cyclic AMP-responsive element-binding protein 3-like protein 2], CREB3L2, BBF2H7
<b>Species</b>	Human
<b>Research Area</b>	Epigenetics and Nuclear Signaling
<b>Target Names</b>	CREB3L2
<b>Image</b>	

**Western blot**All lanes: CREB3L2 antibody at 6 $\mu$ g/ml

Lane 1: Mouse liver tissue

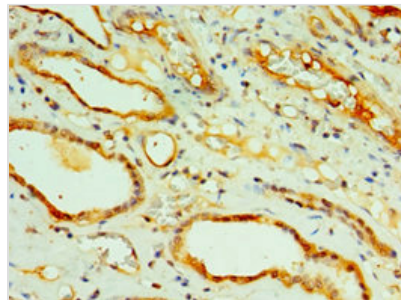
Lane 2: Mouse lung tissue

**Secondary**

Goat polyclonal to rabbit IgG at 1/10000 dilution

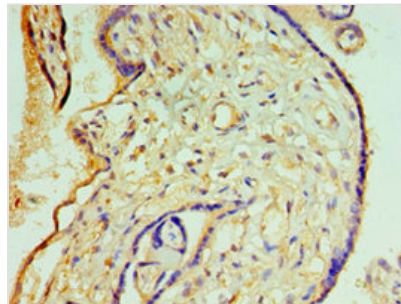
Predicted band size: 58, 51, 28 kDa

Observed band size: 58 kDa

**Immunohistochemistry of paraffin-embedded**

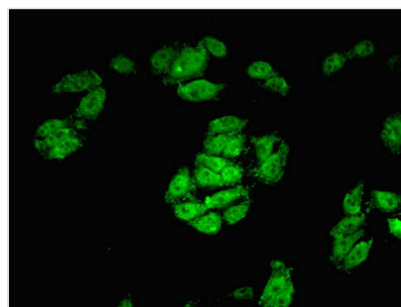
human kidney tissue using CSB-

PA754617ESR2HU at dilution of 1:100

**Immunohistochemistry of paraffin-embedded**

human placenta tissue using CSB-

PA754617ESR2HU at dilution of 1:100

**Immunofluorescent analysis of HepG2 cells**

using CSB-PA754617ESR2HU at dilution of

1:100 and Alexa Fluor 488-conjugated

AffiniPure Goat Anti-Rabbit IgG(H+L)