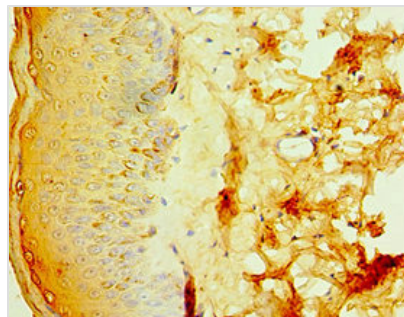




IL20RB Antibody

Product Code	CSB-PA740921ESR1HU
Storage	Upon receipt, store at -20°C or -80°C. Avoid repeated freeze.
Uniprot No.	Q6UXL0
Immunogen	Recombinant Human Interleukin-20 receptor subunit beta protein (48-177AA)
Raised In	Rabbit
Species Reactivity	Human
Tested Applications	ELISA, IHC; Recommended dilution: IHC:1:20-1:200
Relevance	The IL20RA/IL20RB dimer is a receptor for IL19, IL20 and IL24. The IL22RA1/IL20RB dimer is a receptor for IL20 and IL24.
Form	Liquid
Conjugate	Non-conjugated
Storage Buffer	PBS with 0.02% sodium azide, 50% glycerol, pH7.3.
Purification Method	Antigen Affinity Purified
Isotype	IgG
Clonality	Polyclonal
Alias	Interleukin-20 receptor subunit beta (IL-20 receptor subunit beta) (IL-20R-beta) (IL-20RB) (Fibronectin type III domain containing 6) (FNDC6) (IL-20R2), IL20RB, DIRS1
Species	Human
Research Area	Immunology
Target Names	IL20RB

Image



Immunohistochemistry of paraffin-embedded human skin tissue using CSB-PA740921ESR1HU at dilution of 1:100