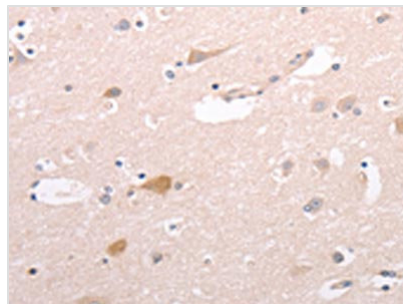




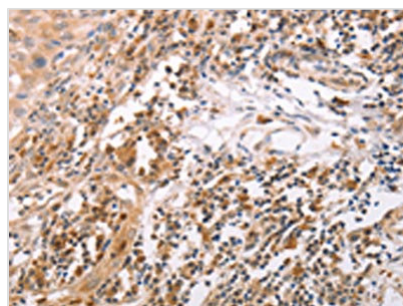
CIDEB Antibody

Product Code	CSB-PA715372
Storage	Upon receipt, store at -20°C or -80°C. Avoid repeated freeze.
Uniprot No.	Q9UHD4
Immunogen	Fusion protein of Human CIDEB
Raised In	Rabbit
Species Reactivity	Human, Mouse
Tested Applications	ELISA, IHC; ELISA: 1:2000-1:10000, IHC: 1:50-1:200
Relevance	This protein can activate apoptosis. It is inhibited by DFFB and interacts with DFFA and DFFB. It has high levels of expression in liver and small intestine, and has lower levels of expression in colon, kidney and spleen. CideB specifically interacts with VLDL structural protein, apolipoprotein B100 (apoB100), but not with albumin, a PTG cargo protein. It can interact with COPII components, Sar1 and Sec24
Form	Liquid
Conjugate	Non-conjugated
Storage Buffer	-20°C, pH7.4 PBS, 0.05% NaN ₃ , 40% Glycerol
Purification Method	Antigen affinity purification
Isotype	IgG
Species	Homo sapiens (Human)
Target Names	CIDEB

Image



The image on the left is immunohistochemistry of paraffin-embedded Human brain tissue using CSB-PA715372 (CIDEB Antibody) at dilution 1/50, on the right is treated with fusion protein. (Original magnification: x200)



The image on the left is immunohistochemistry of paraffin-embedded Human cervical cancer tissue using CSB-PA715372 (CIDEB Antibody) at dilution 1/50, on the right is treated with fusion protein. (Original magnification: x200)