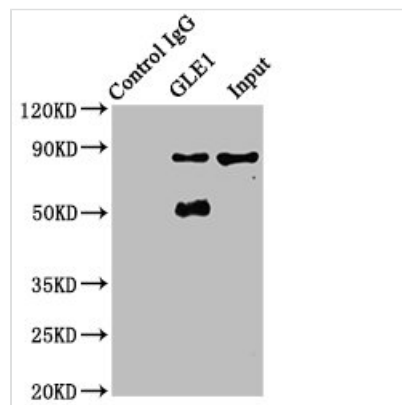




# GLE1 Antibody

<b>Product Code</b>	CSB-PA700651EA01HU
<b>Storage</b>	Upon receipt, store at -20°C or -80°C. Avoid repeated freeze.
<b>Uniprot No.</b>	Q53GS7
<b>Immunogen</b>	Recombinant Human Nucleoporin GLE1 protein (141-380AA)
<b>Raised In</b>	Rabbit
<b>Species Reactivity</b>	Human
<b>Tested Applications</b>	ELISA, WB, IHC, IF, IP; Recommended dilution: WB:1:500-1:5000, IHC:1:20-1:200, IF:1:50-1:200, IP:1:200-1:2000
<b>Relevance</b>	Required for the export of mRNAs containing poly(A) tails from the nucleus into the cytoplasm. May be involved in the terminal step of the mRNA transport through the nuclear pore complex (NPC).
<b>Form</b>	Liquid
<b>Conjugate</b>	Non-conjugated
<b>Storage Buffer</b>	Preservative: 0.03% Proclin 300 Constituents: 50% Glycerol, 0.01M PBS, PH 7.4
<b>Purification Method</b>	>95%, Protein G purified
<b>Isotype</b>	IgG
<b>Clonality</b>	Polyclonal
<b>Alias</b>	Nucleoporin GLE1 (hGLE1) (GLE1-like protein), GLE1, GLE1L
<b>Species</b>	Human
<b>Research Area</b>	Tags & Cell Markers
<b>Target Names</b>	GLE1

## Image



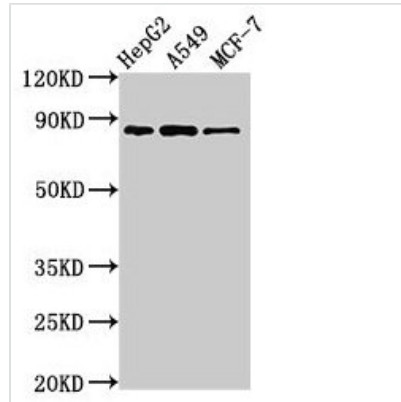
Immunoprecipitating GLE1 in A549 whole cell lysate

Lane 1: Rabbit control IgG instead of CSB-PA700651EA01HU in A549 whole cell lysate.

For western blotting, a HRP-conjugated Protein G antibody was used as the secondary antibody (1/2000)

Lane 2: CSB-PA700651EA01HU (6µg) + A549 whole cell lysate (500µg)

Lane 3: A549 whole cell lysate (20µg)

**Western Blot**

Positive WB detected in: HepG2 whole cell lysate, A549 whole cell lysate, MCF-7 whole cell lysate

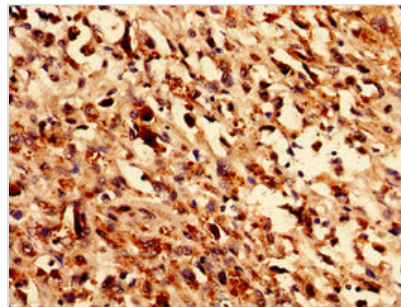
All lanes: GLE1 antibody at 2.8µg/ml

Secondary

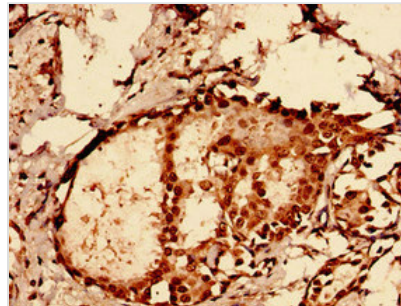
Goat polyclonal to rabbit IgG at 1/50000 dilution

Predicted band size: 80, 76 kDa

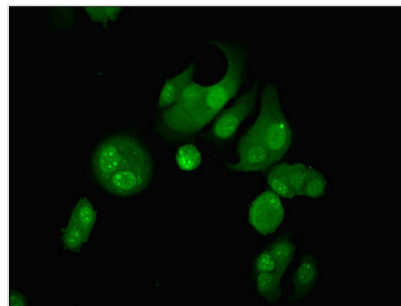
Observed band size: 80 kDa



Immunocytochemistry analysis of human melanoma using CSB-PA700651EA01HU at dilution of 1:100



Immunocytochemistry analysis of human breast cancer using CSB-PA700651EA01HU at dilution of 1:100



Immunofluorescent analysis of MCF-7 cells using CSB-PA700651EA01HU at dilution of 1:100 and Alexa Fluor 488-conjugated AffiniPure Goat Anti-Rabbit IgG(H+L)