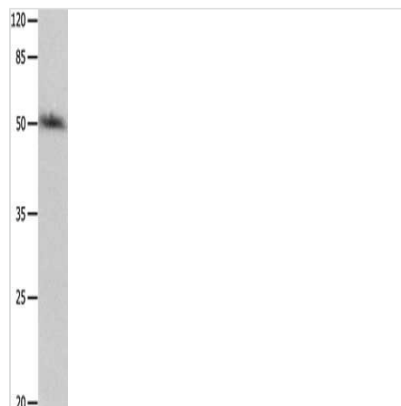




# P2RY2 Antibody

<b>Product Code</b>	CSB-PA697899
<b>Storage</b>	Upon receipt, store at -20°C or -80°C. Avoid repeated freeze.
<b>Uniprot No.</b>	P41231
<b>Immunogen</b>	Synthetic peptide of Human P2RY2
<b>Raised In</b>	Rabbit
<b>Species Reactivity</b>	Human
<b>Tested Applications</b>	ELISA,WB;ELISA:1:1000-1:5000,WB:1:200-1:1000
<b>Relevance</b>	The product of this gene belongs to the family of G-protein coupled receptors. This family has several receptor subtypes with different pharmacological selectivity, which overlaps in some cases, for various adenosine and uridine nucleotides. This receptor is responsive to both adenosine and uridine nucleotides. It may participate in control of the cell cycle of endometrial carcinoma cells. Three transcript variants encoding the same protein have been identified for this gene.
<b>Form</b>	Liquid
<b>Conjugate</b>	Non-conjugated
<b>Storage Buffer</b>	-20°C, pH7.4 PBS, 0.05% NaN <sub>3</sub> , 40% Glycerol
<b>Purification Method</b>	Antigen affinity purification
<b>Isotype</b>	IgG
<b>Species</b>	Homo sapiens (Human)
<b>Target Names</b>	P2RY2

## Image



Gel: 10%SDS-PAGE, Lysate: 40 µg, Lane: HT29 cells, Primary antibody: CSB-PA697899(P2RY2 Antibody) at dilution 1/500, Secondary antibody: Goat anti rabbit IgG at 1/8000 dilution, Exposure time: 1 minute