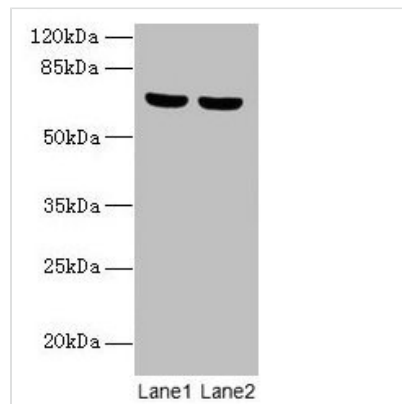




SYTL3 Antibody

Product Code	CSB-PA687190LA01HU
Storage	Upon receipt, store at -20°C or -80°C. Avoid repeated freeze.
Uniprot No.	Q4VX76
Immunogen	Recombinant Human Synaptotagmin-like protein 3 protein (1-300AA)
Raised In	Rabbit
Species Reactivity	Human
Tested Applications	ELISA, WB, IHC; Recommended dilution: WB:1:1000-1:5000, IHC:1:20-1:200
Relevance	May act as Rab effector protein and play a role in vesicle trafficking. Binds phospholipids in the presence of calcium ions.
Form	Liquid
Conjugate	Non-conjugated
Storage Buffer	Preservative: 0.03% Proclin 300 Constituents: 50% Glycerol, 0.01M PBS, PH 7.4
Purification Method	>95%, Protein G purified
Isotype	IgG
Clonality	Polyclonal
Alias	Synaptotagmin-like protein 3 (Exophilin-6), SYTL3, SLP3
Species	Human
Research Area	Signal Transduction
Target Names	SYTL3

Image



Western blot

All lanes: SYTL3 antibody at 5µg/ml

Lane 1: A549 whole cell lysate

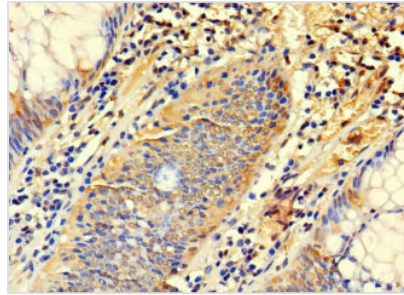
Lane 2: THP-1 whole cell lysate

Secondary

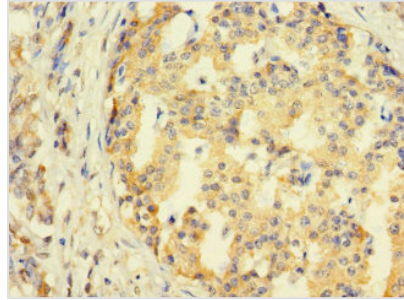
Goat polyclonal to rabbit IgG at 1/10000 dilution

Predicted band size: 69, 61 kDa

Observed band size: 69 kDa



Immunohistochemistry of paraffin-embedded human colon cancer using CSB-PA687190LA01HU at dilution of 1:100



Immunohistochemistry of paraffin-embedded human pancreatic cancer using CSB-PA687190LA01HU at dilution of 1:100