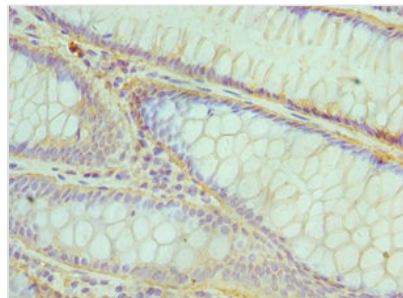




CBFB Antibody

Product Code	CSB-PA623835ESR1HU
Storage	Upon receipt, store at -20°C or -80°C. Avoid repeated freeze.
Uniprot No.	Q13951
Immunogen	Recombinant Human Core-binding factor subunit beta protein (1-182AA)
Raised In	Rabbit
Species Reactivity	Human
Tested Applications	ELISA, IHC; Recommended dilution: IHC:1:20-1:200
Relevance	CBF binds to the core site, 5'\\'-PYGPYGGT-3'\\'', of a number of enhancers and promoters, including murine leukemia virus, polyomavirus enhancer, T-cell receptor enhancers, LCK, IL3 and GM-CSF promoters. CBFB enhances DNA binding by RUNX1.
Form	Liquid
Conjugate	Non-conjugated
Storage Buffer	PBS with 0.02% sodium azide, 50% glycerol, pH7.3.
Purification Method	Antigen Affinity Purified
Isotype	IgG
Clonality	Polyclonal
Alias	Core-binding factor subunit beta (CBF-beta) (Polyomavirus enhancer-binding protein 2 beta subunit) (PEA2-beta) (PEBP2-beta) (SL3-3 enhancer factor 1 subunit beta) (SL3/AKV core-binding factor beta subunit), CBFB
Species	Human
Research Area	Epigenetics and Nuclear Signaling
Target Names	CBFB

Image



Immunohistochemistry of paraffin-embedded human colon cancer using CSB-PA623835ESR1HU at dilution of 1:100