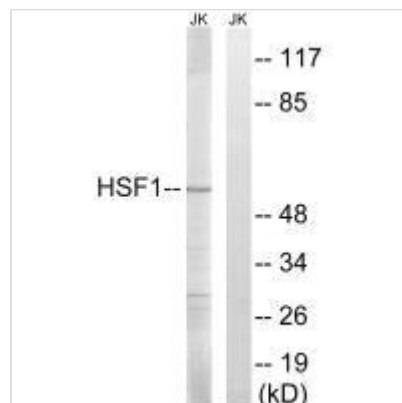




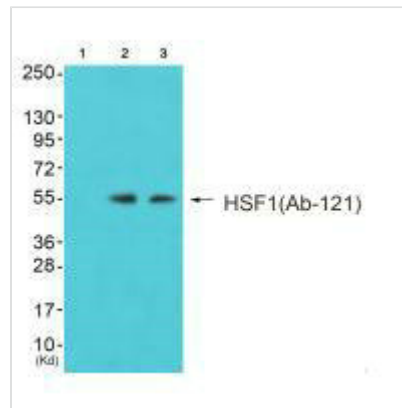
HSF1 (Ab-121) Antibody

Product Code	CSB-PA616169
Storage	Upon receipt, store at -20°C or -80°C. Avoid repeated freeze.
Uniprot No.	Q00613
Immunogen	Synthesized non-phosphopeptide derived from Human HSF1 around the phosphorylation site of serine 121 (V-T-S(p)-V-S).
Raised In	Rabbit
Species Reactivity	Human,Mouse
Specificity	The antibody detects endogenous levels of total HSF1 protein
Tested Applications	ELISA,WB;WB:1:500-1:3000
Relevance	DNA-binding protein that specifically binds heat shock promoter elements (HSE) and activates transcription. In higher eukaryotes, HSF is unable to bind to the HSE unless the cells are heat shocked. Rabindran S.K.,Proc. Natl. Acad. Sci. U.S.A. 88:6906-6910(1991). The MGC Project Team;Genome Res. 14:2121-2127(2004). Schuetz T.J.,Proc. Natl. Acad. Sci. U.S.A. 88:6911-6915(1991).
Form	Rabbit IgG in phosphate buffered saline (without Mg ²⁺ and Ca ²⁺), pH 7.4, 150mM NaCl, 0.02% sodium azide and 50% glycerol.
Purification Method	The antibody was affinity-purified from rabbit antiserum by affinity-chromatography using epitope-specific immunogen.
Clonality	Polyclonal
Alias	Heat shock factor protein 1; Heat shock transcription factor 1; HSF 1; HSTF 1; HSTF1
Product Type	Polyclonal Antibody
Species	Homo sapiens (Human)
Target Names	HSF1

Image



Western blot analysis of extracts from Jurkat cells, using HSF1 (Ab-121) antibody.



Western blot analysis of extracts from K562 cells (Lane 2) and 3T3 cells (Lane 3), using HSF1 (Ab-121) antibody. The lane on the left is treated with synthesized peptide.