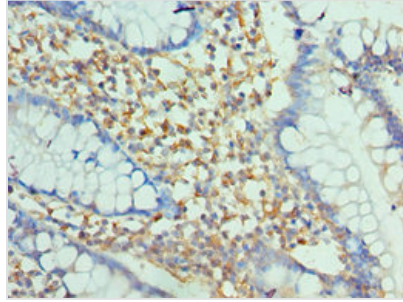


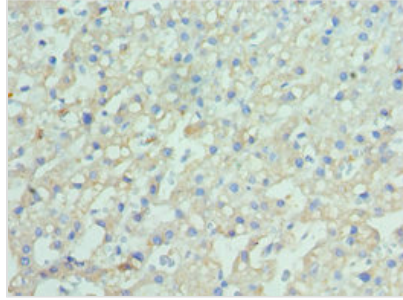


ENPP2 Antibody

Product Code	CSB-PA613427ESR1HU
Storage	Upon receipt, store at -20°C or -80°C. Avoid repeated freeze.
Uniprot No.	Q13822
Immunogen	Recombinant Human Ectonucleotide pyrophosphatase/phosphodiesterase family member 2 protein (564-863AA)
Raised In	Rabbit
Species Reactivity	Human
Tested Applications	ELISA, IHC; Recommended dilution: IHC:1:20-1:200
Relevance	Hydrolyzes lysophospholipids to produce lysophosphatidic acid (LPA) in extracellular fluids. Major substrate is lysophosphatidylcholine. Also can act on sphingosylphosphorylcholine producing sphingosine-1-phosphate, a modulator of cell motility. Can hydrolyze, in vitro, bis-pNPP, to some extent pNP-TMP, and barely ATP. Involved in several motility-related processes such as angiogenesis and neurite outgrowth. Acts as an angiogenic factor by stimulating migration of smooth muscle cells and microtubule formation. Stimulates migration of melanoma cells, probably via a pertussis toxin-sensitive G protein. May have a role in induction of parturition. Possible involvement in cell proliferation and adipose tissue development. Tumor cell motility-stimulating factor.
Form	Liquid
Conjugate	Non-conjugated
Storage Buffer	PBS with 0.02% sodium azide, 50% glycerol, pH7.3.
Purification Method	Antigen Affinity Purified
Isotype	IgG
Clonality	Polyclonal
Alias	Ectonucleotide pyrophosphatase/phosphodiesterase family member 2 (E-NPP 2) (EC 3.1.4.39) (Autotaxin) (Extracellular lysophospholipase D) (LysoPLD), ENPP2, ATX PDNP2
Species	Human
Research Area	Cardiovascular
Target Names	ENPP2
Image	



Immunohistochemistry of paraffin-embedded human small intestine tissue using CSB-PA613427ESR1HU at dilution of 1:100



Immunohistochemistry of paraffin-embedded human liver cancer using CSB-PA613427ESR1HU at dilution of 1:100