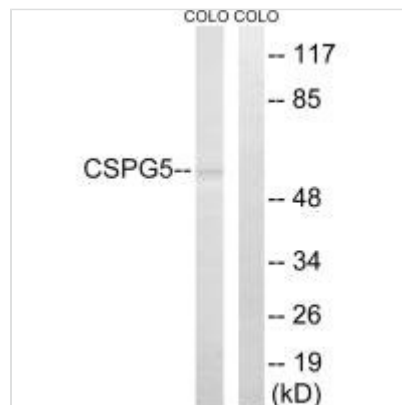




# CSPG5 Antibody

<b>Product Code</b>	CSB-PA592587
<b>Storage</b>	Upon receipt, store at -20°C or -80°C. Avoid repeated freeze.
<b>Uniprot No.</b>	O95196
<b>Immunogen</b>	Synthesized peptide derived from internal of Human CSPG5.
<b>Raised In</b>	Rabbit
<b>Species Reactivity</b>	Human
<b>Specificity</b>	The antibody detects endogenous levels of total CSPG5 protein.
<b>Tested Applications</b>	ELISA,WB;WB:1:500-1:3000
<b>Relevance</b>	May function as a growth and differentiation factor involved in neuritogenesis. May induce ERBB3 activation.  Yasuda Y., Neurosci. Res. 32:313-322(1998). Aono S., Submitted (DEC-2001) to the EMBL/GenBank/DDBJ databases. Muzny D.M., Nature 440:1194-1198(2006).
<b>Form</b>	Rabbit IgG in phosphate buffered saline (without Mg <sup>2+</sup> and Ca <sup>2+</sup> ), pH 7.4, 150mM NaCl, 0.02% sodium azide and 50% glycerol.
<b>Purification Method</b>	The antibody was affinity-purified from rabbit antiserum by affinity-chromatography using epitope-specific immunogen.
<b>Clonality</b>	Polyclonal
<b>Alias</b>	Chondroitin sulfate proteoglycan 5; Neuroglycan C; Acidic leucine-rich EGF-like domain-containing brain protein;
<b>Product Type</b>	Polyclonal Antibody
<b>Species</b>	Homo sapiens (Human)
<b>Target Names</b>	CSPG5

## Image



Western blot analysis of extracts from COLO cells, using CSPG5 antibody.