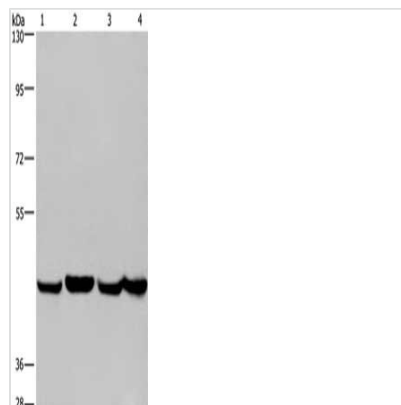




RBMV1A1 Antibody

Product Code	CSB-PA586044
Storage	Upon receipt, store at -20°C or -80°C. Avoid repeated freeze.
Uniprot No.	P0DJ3
Immunogen	Fusion protein of Human RBMY1A1
Raised In	Rabbit
Species Reactivity	Human
Tested Applications	ELISA,WB;ELISA:1:2000-1:5000,WB:1:500-1:2000
Relevance	This gene encodes a protein containing an RNA-binding motif in the N-terminus and four SRGY (serine, arginine, glycine, tyrosine) boxes in the C-terminus. Multiple copies of this gene are found in the AZFb azoospermia factor region of chromosome Y and the encoded protein is thought to be involved in spermatogenesis. Most copies of this locus are pseudogenes, although six highly similar copies have full-length ORFs and are considered functional. Four functional copies of this gene are found within inverted repeat IR2; two functional copies of this gene are found in palindrome P3, along with two copies of PTPN13-like, Y-linked.
Form	Liquid
Conjugate	Non-conjugated
Storage Buffer	-20°C, pH7.4 PBS, 0.05% NaN ₃ , 40% Glycerol
Purification Method	Antigen affinity purification
Isotype	IgG
Alias	RNA binding motif protein, Y-linked, family 1, member A1
Species	Homo sapiens (Human)
Target Names	RBMV1A1

Image



Gel: 6%SDS-PAGE, Lysate: 40 µg, Lane 1-4: A549 cells, Hela cells, PC3 cells, HepG2 cells, Primary antibody: CSB-PA586044(RBMV1A1 Antibody) at dilution 1/350, Secondary antibody: Goat anti rabbit IgG at 1/8000 dilution, Exposure time: 30 seconds