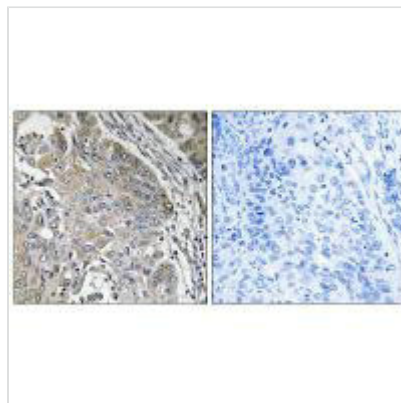




SPINK6 Antibody

Product Code	CSB-PA579657
Storage	Upon receipt, store at -20°C or -80°C. Avoid repeated freeze.
Uniprot No.	Q6UWN8
Immunogen	Synthesized peptide derived from internal of Human SPINK6.
Raised In	Rabbit
Species Reactivity	Human
Specificity	The antibody detects endogenous levels of total SPINK6 protein.
Tested Applications	ELISA,IHC;IHC:1:50-1:100
Relevance	Serine protease inhibitor selective for kallikreins. Efficiently inhibits KLK4, KLK5, KLK6, KLK7, KLK12, KLK13 and KLK14. Doesn't inhibit KLK8. Clark H.F., Genome Res. 13:2265-2270(2003). Zhang Z.,Protein Sci. 13:2819-2824(2004).
Form	Rabbit IgG in phosphate buffered saline (without Mg ²⁺ and Ca ²⁺), pH 7.4, 150mM NaCl, 0.02% sodium azide and 50% glycerol.
Purification Method	The antibody was affinity-purified from rabbit antiserum by affinity-chromatography using epitope-specific immunogen.
Clonality	Polyclonal
Alias	Serine protease inhibitor Kazal-type 6; SPINK6;
Product Type	Polyclonal Antibody
Species	Homo sapiens (Human)
Target Names	SPINK6

Image



Immunohistochemistry analysis of paraffin-embedded human lung carcinoma tissue using SPINK6 antibody.