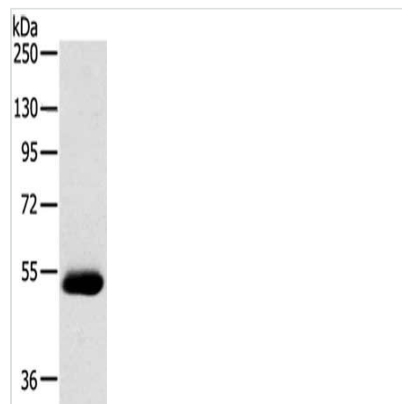




# SERINC4 Antibody

<b>Product Code</b>	CSB-PA567724
<b>Storage</b>	Upon receipt, store at -20°C or -80°C. Avoid repeated freeze.
<b>Uniprot No.</b>	A6NH21
<b>Immunogen</b>	Synthetic peptide of Human SERINC4
<b>Raised In</b>	Rabbit
<b>Species Reactivity</b>	Human
<b>Tested Applications</b>	ELISA,WB;ELISA:1:2000-1:5000,WB:1:500-1:2000
<b>Relevance</b>	SERINC4 (serine incorporator 4) is a 518 amino acid multi-pass membrane protein that belongs to the TDE1 family. The SERINC4 protein Incorporates a polar amino acid serine into membranes and facilitates the synthesis of two serine-derived lipids, phosphatidylserine and sphingolipids. Because SERINC proteins contain 11 transmembrane segments resembling amino acid transporters, SERINC4 may also function as an L-serine transporter by carrying serine molecules into the hydrophobic milieu of membrane lipid bilayers.
<b>Form</b>	Liquid
<b>Conjugate</b>	Non-conjugated
<b>Storage Buffer</b>	-20°C, pH7.4 PBS, 0.05% NaN <sub>3</sub> , 40% Glycerol
<b>Purification Method</b>	Antigen affinity purification
<b>Isotype</b>	IgG
<b>Species</b>	Homo sapiens (Human)
<b>Target Names</b>	SERINC4

## Image



Gel: 8%SDS-PAGE,Lysate: 40 µg,,Primary antibody: CSB-PA567724(SERINC4 Antibody) at dilution 1/200 dilution,Secondary antibody: Goat anti rabbit IgG at 1/8000 dilution,Exposure time: 5 minutes