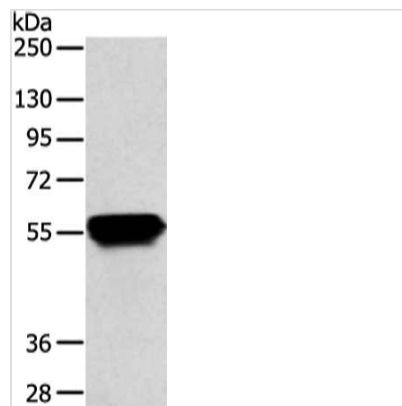




KRT4 Antibody

| | |
|----------------------------|--|
| Product Code | CSB-PA552024 |
| Storage | Upon receipt, store at -20°C or -80°C. Avoid repeated freeze. |
| Uniprot No. | P19013 |
| Immunogen | Fusion protein of Human KRT4 |
| Raised In | Rabbit |
| Species Reactivity | Human,Mouse,Rat |
| Tested Applications | ELISA,WB;ELISA:1:2000-1:10000,WB:1:1000-1:5000 |
| Relevance | The protein encoded by this gene is a member of the keratin gene family. The type II cytokeratins consist of basic or neutral proteins which are arranged in pairs of heterotypic keratin chains coexpressed during differentiation of simple and stratified epithelial tissues. This type II cytokeratin is specifically expressed in differentiated layers of the mucosal and esophageal epithelia with family member KRT13. |
| Form | Liquid |
| Conjugate | Non-conjugated |
| Storage Buffer | -20°C, pH7.4 PBS, 0.05% NaN ₃ , 40% Glycerol |
| Purification Method | Antigen affinity purification |
| Isotype | IgG |
| Alias | keratin 4, type II |
| Species | Homo sapiens (Human) |
| Target Names | KRT4 |

Image



Gel: 8%SDS-PAGE, Lysate: 40 µg, Lane: HeLa cell, Primary antibody: CSB-PA552024(KRT4 Antibody) at dilution 1/800 dilution, Secondary antibody: Goat anti rabbit IgG at 1/8000 dilution, Exposure time: 15 seconds