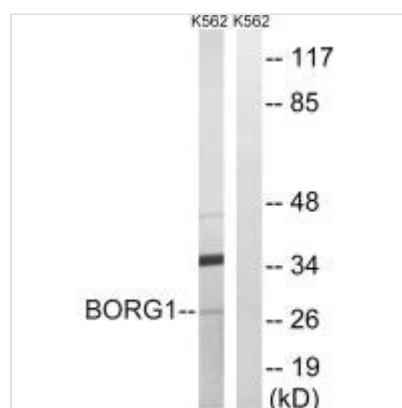




# CDC42EP2 Antibody

<b>Product Code</b>	CSB-PA546490
<b>Storage</b>	Upon receipt, store at -20°C or -80°C. Avoid repeated freeze.
<b>Uniprot No.</b>	O14613
<b>Immunogen</b>	Synthesized peptide derived from internal of Human BORG1.
<b>Raised In</b>	Rabbit
<b>Species Reactivity</b>	Human
<b>Specificity</b>	The antibody detects endogenous levels of total BORG1 protein.
<b>Tested Applications</b>	ELISA,WB;WB:1:500-1:3000
<b>Relevance</b>	Probably involved in the organization of the actin cytoskeleton. May act downstream of CDC42 to induce actin filament assembly leading to cell shape changes. Induces pseudopodia formation in fibroblasts in a CDC42-dependent manner.  Guru S.C., Genome Res. 7:725-735(1997). Joberty G., Mol. Cell. Biol. 19:6585-6597(1999). Hirsch D.S., J. Biol. Chem. 276:875-883(2001)
<b>Form</b>	Rabbit IgG in phosphate buffered saline (without Mg <sup>2+</sup> and Ca <sup>2+</sup> ), pH 7.4, 150mM NaCl, 0.02% sodium azide and 50% glycerol.
<b>Purification Method</b>	The antibody was affinity-purified from rabbit antiserum by affinity-chromatography using epitope-specific immunogen.
<b>Clonality</b>	Polyclonal
<b>Alias</b>	Cdc42 effector protein 2; Binder of Rho GTPases 1;
<b>Product Type</b>	Polyclonal Antibody
<b>Species</b>	Homo sapiens (Human)
<b>Target Names</b>	CDC42EP2

## Image



Western blot analysis of extracts from K562 cells, using BORG1 antibody.