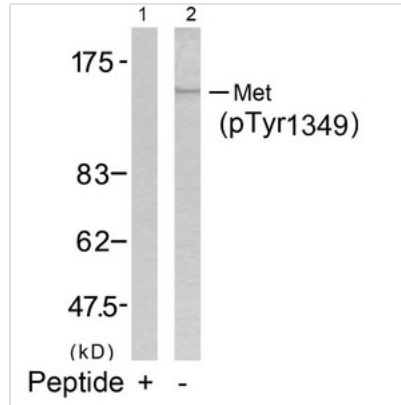




Phospho-MET (Tyr1349) Antibody

Product Code	CSB-PA446172
Storage	Upon receipt, store at -20°C or -80°C. Avoid repeated freeze.
Uniprot No.	P08581
Immunogen	Peptide sequence around phosphorylation site of tyrosine 1349 (E-H-Y(p)-V-H) derived from Human Met.
Raised In	Rabbit
Species Reactivity	Human,Mouse,Rat
Specificity	The antibody detects endogenous level of Met only when phosphorylated at tyrosine 1349.
Tested Applications	ELISA,WB;WB:1:500-1:1000
Relevance	<p>Receptor for hepatocyte growth factor and scatter factor. Has a tyrosine-protein kinase activity. Functions in cell proliferation, scattering, morphogenesis and survival.</p> <p>Fan S, et al. (2001) Mol Cell Biol; 21(15): 4968-4984 Schiering N, et al. (2003) Proc Natl Acad Sci U S A; 100(22): 12654-12659 Plopper GE, et al. (1995) Mol Biol Cell; 6(10): 1349-1365 Ponzetto C, et al. (1993) Mol Cell Biol; 13(8): 4600-4608 Jackson PA, et al. (2001) Plant Physiol; 127(3): 1065-1076</p>
Form	Supplied at 1.0mg/mL in phosphate buffered saline (without Mg ²⁺ and Ca ²⁺), pH 7.4, 150mM NaCl, 0.02% sodium azide and 50% glycerol.
Purification Method	Antibodies were produced by immunizing rabbits with synthetic phosphopeptide and KLH conjugates. Antibodies were purified by affinity-chromatography using epitope-specific phosphopeptide. Non-phospho specific antibodies were removed by chromatography
Clonality	Polyclonal
Alias	HGF receptor; HGF-SF receptor; Met proto-oncogene tyrosine kinase; c-met; kinase Met
Product Type	Polyclonal Antibody
Species	Homo sapiens (Human)
Target Names	MET
Image	



Western blot analysis of extracts from HepG2 cells using Met(Phospho-Tyr1349) Antibody(Lane 2) and the same antibody preincubated with blocking peptide(Lane1).

Product Modify

Phospho-Tyr1349