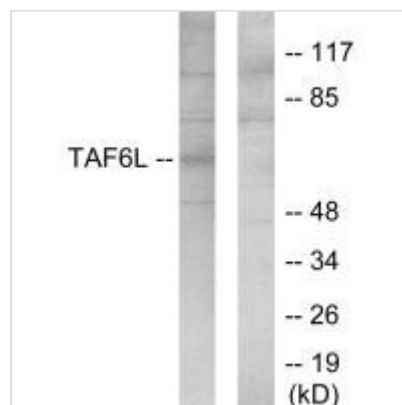




# TAF6L Antibody

<b>Product Code</b>	CSB-PA438797
<b>Storage</b>	Upon receipt, store at -20°C or -80°C. Avoid repeated freeze.
<b>Uniprot No.</b>	Q9Y6J9
<b>Immunogen</b>	Synthesized peptide derived from internal of Human TAF6L.
<b>Raised In</b>	Rabbit
<b>Species Reactivity</b>	Human, Mouse
<b>Specificity</b>	The antibody detects endogenous levels of total TAF6L protein.
<b>Tested Applications</b>	ELISA, WB; WB: 1:500-1:3000
<b>Relevance</b>	<p>Functions as a component of the PCAF complex. The PCAF complex is capable of efficiently acetylating histones in a nucleosomal context. The PCAF complex could be considered as the human version of the yeast SAGA complex.</p> <p>Martinez E., Mol. Cell. Biol. 21:6782-6795(2001).  Matsuoka S., Science 316:1160-1166(2007).  Struhl K., Cell 94:1-4(1998).</p>
<b>Form</b>	Rabbit IgG in phosphate buffered saline (without Mg <sup>2+</sup> and Ca <sup>2+</sup> ), pH 7.4, 150mM NaCl, 0.02% sodium azide and 50% glycerol.
<b>Purification Method</b>	The antibody was affinity-purified from rabbit antiserum by affinity-chromatography using epitope-specific immunogen.
<b>Clonality</b>	Polyclonal
<b>Alias</b>	TAF6-like RNA polymerase II p300/CBP-associated factor-associated factor 65 kDa subunit 6L; PCAF-associated factor 65 alpha; PAF65-alpha; TAF6L; PAF65A
<b>Product Type</b>	Polyclonal Antibody
<b>Species</b>	Homo sapiens (Human)
<b>Target Names</b>	TAF6L

## Image



Western blot analysis of extracts from 293 cells, using TAF6L antibody.