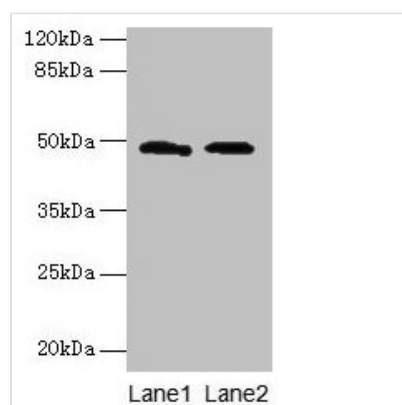




surA Antibody

Product Code	CSB-PA359693HA01ENV
Abbreviation	Chaperone SurA
Storage	Upon receipt, store at -20°C or -80°C. Avoid repeated freeze.
Uniprot No.	P0ABZ6
Immunogen	Recombinant Escherichia coli Chaperone SurA protein (21-428AA)
Raised In	Rabbit
Species Reactivity	Escherichia coli
Tested Applications	ELISA, WB; Recommended dilution: WB:1:1000-1:5000
Relevance	Chaperone involved in the correct folding and assembly of outer membrane proteins, such as OmpA, OmpF and LamB. Recognizes specific patterns of aromatic residues and the orientation of their side chains, which are found more frequently in integral outer membrane proteins. May act in both early periplasmic and late outer membrane-associated steps of protein maturation. Essential for the survival of E.coli in stationary phase. Required for pilus biogenesis.
Form	Liquid
Conjugate	Non-conjugated
Storage Buffer	Preservative: 0.03% Proclin 300 Constituents: 50% Glycerol, 0.01M PBS, PH 7.4
Purification Method	>95%, Protein G purified
Isotype	IgG
Clonality	Polyclonal
Alias	Chaperone SurA (Peptidyl-prolyl cis-trans isomerase SurA) (PPIase SurA) (EC 5.2.1.8) (Rotamase SurA) (Survival protein A), surA
Species	Escherichia coli
Research Area	Others
Target Names	surA

Image



Western blot

All lanes: surA antibody at 12µg/ml

Lane 1: 293T whole cell lysate

Lane 2: DH5α whole cell lysate

Secondary

Goat polyclonal to rabbit IgG at 1/10000 dilution

Predicted band size: 48 kDa

Observed band size: 48 kDa

