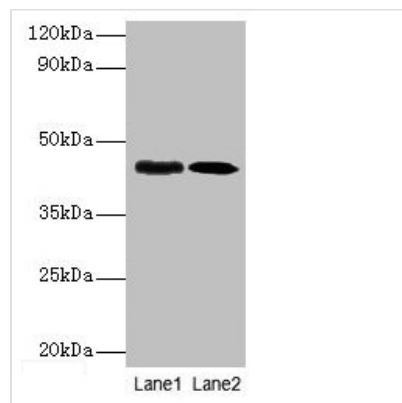




lapB Antibody

Product Code	CSB-PA359577HA01ENV
Storage	Upon receipt, store at -20°C or -80°C. Avoid repeated freeze.
Uniprot No.	P0AB58
Immunogen	Recombinant Escherichia coli Lipopolysaccharide assembly protein B protein (17-389AA)
Raised In	Rabbit
Species Reactivity	Escherichia coli
Tested Applications	ELISA, WB; Recommended dilution: WB:1:1000-1:5000
Relevance	Modulates cellular lipopolysaccharide (LPS) levels by regulating LpxC, which is involved in lipid A biosynthesis. May act by modulating the proteolytic activity of FtsH towards LpxC. May also coordinate assembly of proteins involved in LPS synthesis at the plasma membrane.
Form	Liquid
Conjugate	Non-conjugated
Storage Buffer	Preservative: 0.03% Proclin 300 Constituents: 50% Glycerol, 0.01M PBS, PH 7.4
Purification Method	>95%, Protein G purified
Isotype	IgG
Clonality	Polyclonal
Alias	Lipopolysaccharide assembly protein B (Lipopolysaccharide regulatory protein), lapB, yciM
Species	Escherichia coli
Research Area	Others
Target Names	lapB

Image



Western blot

All lanes: lapB antibody at 1: 1000

Lane1: DH5α whole cell lysate at 10μg

Lane2: DH5α whole cell lysate at 1μg

Secondary

Goat polyclonal to rabbit IgG at 1/10000 dilution

Predicted band size: 45 kDa

Observed band size: 45 kDa