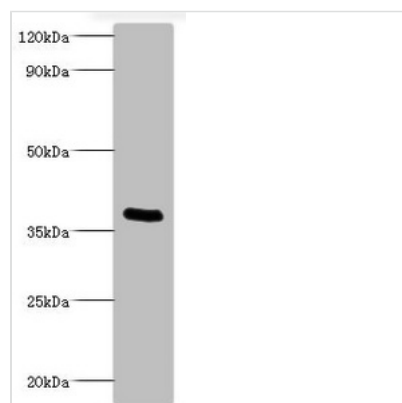




# ptxA Antibody

<b>Product Code</b>	CSB-PA356423LA01Bua
<b>Storage</b>	Upon receipt, store at -20°C or -80°C. Avoid repeated freeze.
<b>Uniprot No.</b>	P04977
<b>Immunogen</b>	Recombinant Bordetella pertussis Pertussis toxin subunit 1 protein (35-269AA)
<b>Raised In</b>	Rabbit
<b>Species Reactivity</b>	Bordetella pertussis
<b>Tested Applications</b>	ELISA, WB; Recommended dilution: WB:1:1000-1:5000
<b>Relevance</b>	S1 is an NAD-dependent ADP-ribosyltransferase, which plays a crucial role in the pathogenesis of B.pertussis causing disruption of normal host cellular regulation. It catalyzes the ADP-ribosylation of a cysteine in the alpha subunit of host heterotrimeric G proteins. In the absence of G proteins it also catalyzes the cleavage of NAD <sup>+</sup> into ADP-ribose and nicotinamide. It irreversibly uncouples the G-alpha GTP-binding proteins from their membrane receptors.
<b>Form</b>	Liquid
<b>Conjugate</b>	Non-conjugated
<b>Storage Buffer</b>	Preservative: 0.03% Proclin 300 Constituents: 50% Glycerol, 0.01M PBS, PH 7.4
<b>Purification Method</b>	>95%, Protein G purified
<b>Isotype</b>	IgG
<b>Clonality</b>	Polyclonal
<b>Alias</b>	Pertussis toxin subunit 1 (PTX S1) (Islet-activating protein S1) (IAP S1) (NAD-dependent ADP-ribosyltransferase) (EC 2.4.2.-), ptxA
<b>Species</b>	Bordetella pertussis
<b>Research Area</b>	Others
<b>Target Names</b>	ptxA

## Image



Western blot  
 All lanes: Bordetella pertussis pertussis toxin subunit 1 antibody at 2µg/ml + recombinant Bordetella pertussis pertussis toxin subunit 1 100ng  
 Secondary  
 Goat polyclonal to rabbit IgG at 1/1000 dilution  
 Predicted band size: 36 kDa  
 Observed band size: 36 kDa