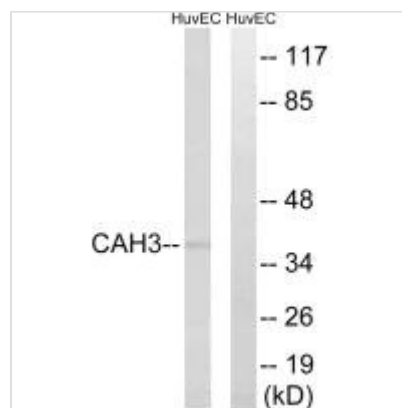




CA3 Antibody

Product Code	CSB-PA299007
Storage	Upon receipt, store at -20°C or -80°C. Avoid repeated freeze.
Uniprot No.	P07451
Immunogen	Synthesized peptide derived from internal of Human CA3.
Raised In	Rabbit
Species Reactivity	Human
Specificity	The antibody detects endogenous levels of total CA3 protein.
Tested Applications	ELISA,WB;WB:1:500-1:3000
Relevance	Reversible hydration of carbon dioxide. Lloyd J., Gene 41:233-239(1986). Wade R., Proc. Natl. Acad. Sci. U.S.A. 83:9571-9575(1986). Ota T., Nat. Genet. 36:40-45(2004).
Form	Rabbit IgG in phosphate buffered saline (without Mg ²⁺ and Ca ²⁺), pH 7.4, 150mM NaCl, 0.02% sodium azide and 50% glycerol.
Purification Method	The antibody was affinity-purified from rabbit antiserum by affinity-chromatography using epitope-specific immunogen.
Clonality	Polyclonal
Alias	CA-III; CAH3; carbonate dehydratase III; carbonic anhydrase 3; carbonic anhydrase III
Product Type	Polyclonal Antibody
Species	Homo sapiens (Human)
Target Names	CA3

Image



Western blot analysis of extracts from HUVEC cells, using CA3 antibody.