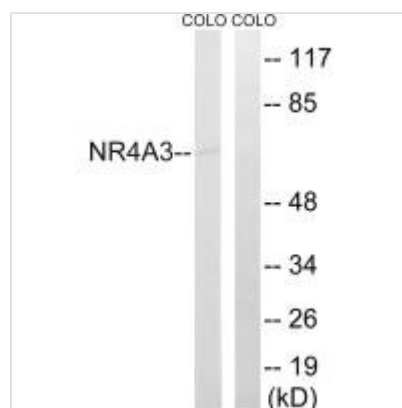




NR4A3 Antibody

Product Code	CSB-PA292630
Storage	Upon receipt, store at -20°C or -80°C. Avoid repeated freeze.
Uniprot No.	Q92570
Immunogen	Synthesized peptide derived from internal of Human NR4A3.
Raised In	Rabbit
Species Reactivity	Human
Specificity	The antibody detects endogenous levels of total NR4A3 protein
Tested Applications	ELISA, WB; WB: 1:500-1:3000
Relevance	Binds to the B1A response-element. Ohkura N., Biochim. Biophys. Acta 1308:205-214(1996). Hedvat C.V., Mol. Endocrinol. 9:1692-1700(1995). Clark J., Oncogene 12:229-235(1996).
Form	Rabbit IgG in phosphate buffered saline (without Mg ²⁺ and Ca ²⁺), pH 7.4, 150mM NaCl, 0.02% sodium azide and 50% glycerol.
Purification Method	The antibody was affinity-purified from rabbit antiserum by affinity-chromatography using epitope-specific immunogen.
Clonality	Polyclonal
Alias	Nuclear receptor subfamily 4 group A member 3; Nuclear hormone receptor NOR-1; Neuron-derived orphan receptor 1; Mitogen-induced nuclear orphan receptor;
Product Type	Polyclonal Antibody
Species	Homo sapiens (Human)
Target Names	NR4A3

Image



Western blot analysis of extracts from COLO cells, using NR4A3 antibody.