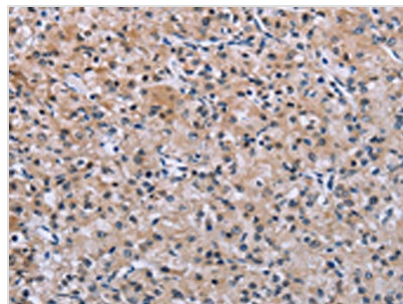




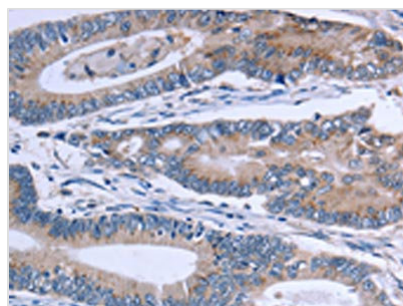
SLC1A6 Antibody

Product Code	CSB-PA288814
Storage	Upon receipt, store at -20°C or -80°C. Avoid repeated freeze.
Uniprot No.	P48664
Immunogen	Synthetic peptide of Human SLC1A6
Raised In	Rabbit
Species Reactivity	Human,Mouse,Rat
Tested Applications	ELISA,WB,IHC;ELISA:1:500-1:5000,WB:1:500-1:1000,IHC:1:25-1:100
Relevance	Excitatory amino-acid transporter 4 (EAAT4) is a protein that in humans is encoded by the SLC1A6 gene.It is a member of the high-affinity glutamate and neutral amino acid-transporter family. It transports L-glutamate and also L- and D-aspartate predominantly in the cerebellar cortex. Genetic polymorphism in the SLC1A6 gene is suggested to be referred to glutamatergic dysfunction in schizophrenia pathogenesis.
Form	Liquid
Conjugate	Non-conjugated
Storage Buffer	-20°C, pH7.4 PBS, 0.05% NaN3, 40% Glycerol
Purification Method	Antigen affinity purification
Isotype	IgG
Species	Homo sapiens (Human)
Target Names	SLC1A6

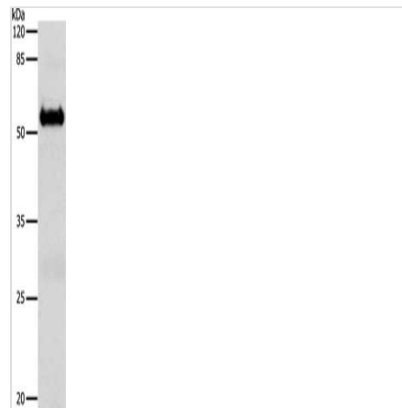
Image



The image on the left is immunohistochemistry of paraffin-embedded Human prostate cancer tissue using CSB-PA288814(SLC1A6 Antibody) at dilution 1/40, on the right is treated with synthetic peptide. (Original magnification: x200)



The image on the left is immunohistochemistry of paraffin-embedded Human colon cancer tissue using CSB-PA288814(SLC1A6 Antibody) at dilution 1/40, on the right is treated with synthetic peptide. (Original magnification: x200)



Gel: 10%SDS-PAGE, Lysate: 30 μ g, Lane:
Mouse brain tissue, Primary antibody: CSB-
PA288814(SLC1A6 Antibody) at dilution 1/600,
Secondary antibody: Goat anti rabbit IgG at
1/8000 dilution, Exposure time: 1 minute