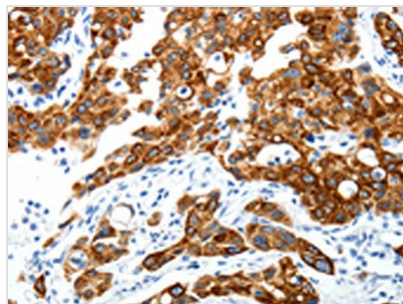




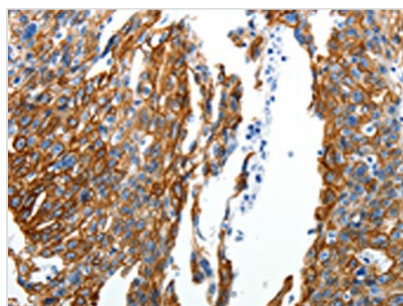
ABI3BP Antibody

Product Code	CSB-PA281021
Storage	Upon receipt, store at -20°C or -80°C. Avoid repeated freeze.
Uniprot No.	Q7Z7G0
Immunogen	Synthetic peptide of Human ABI3BP
Raised In	Rabbit
Species Reactivity	Human
Tested Applications	ELISA,IHC;ELISA:1:2000-1:5000,IHC:1:25-1:100
Relevance	TARSH gene expression is dramatically induced in mouse embryonic fibroblasts (MEFs) replicative senescence and suppressed in human lung carcinoma specimens and thyroid carcinomas. The experiment observed that ABI3 expression is reduced or lost in most carcinomas but also that there is a positive correlation between ABI3 and ABI3BP expression. And it express high levels in brain, heart, lung, liver, pancreas kidney and placenta.
Form	Liquid
Conjugate	Non-conjugated
Storage Buffer	-20°C, pH7.4 PBS, 0.05% NaN ₃ , 40% Glycerol
Purification Method	Antigen affinity purification
Isotype	IgG
Species	Homo sapiens (Human)
Target Names	ABI3BP

Image



The image on the left is immunohistochemistry of paraffin-embedded Human lung cancer tissue using CSB-PA281021(ABI3BP Antibody) at dilution 1/25, on the right is treated with synthetic peptide. (Original magnification: x200)



The image on the left is immunohistochemistry of paraffin-embedded Human ovarian cancer tissue using CSB-PA281021(ABI3BP Antibody) at dilution 1/25, on the right is treated with synthetic peptide. (Original magnification: x200)