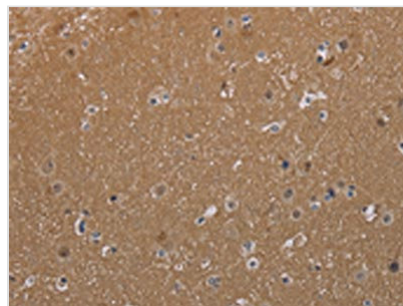




# MAGEL2 Antibody

<b>Product Code</b>	CSB-PA277591
<b>Storage</b>	Upon receipt, store at -20°C or -80°C. Avoid repeated freeze.
<b>Uniprot No.</b>	Q9UJ55
<b>Immunogen</b>	Synthetic peptide of Human MAGEL2
<b>Raised In</b>	Rabbit
<b>Species Reactivity</b>	Human
<b>Tested Applications</b>	ELISA,IHC;ELISA:1:2000-1:5000,IHC:1:50-1:200
<b>Relevance</b>	Prader-Willi syndrome (PWS) is caused by the loss of expression of imprinted genes in chromosome 15q11-q13 region. Affected individuals exhibit neonatal hypotonia, developmental delay, and childhood-onset obesity. Necdin (NDN), a gene involved in the terminal differentiation of neurons, localizes to this region of the genome and has been implicated as one of the genes responsible for the etiology of PWS. This gene is structurally similar to NDN, is also localized to the PWS chromosomal region, and is paternally imprinted, suggesting a possible role for it in PWS.
<b>Form</b>	Liquid
<b>Conjugate</b>	Non-conjugated
<b>Storage Buffer</b>	-20°C, pH7.4 PBS, 0.05% NaN <sub>3</sub> , 40% Glycerol
<b>Purification Method</b>	Antigen affinity purification
<b>Isotype</b>	IgG
<b>Species</b>	Homo sapiens (Human)
<b>Target Names</b>	MAGEL2

## Image



The image on the left is immunohistochemistry of paraffin-embedded Human brain tissue using CSB-PA277591(MAGEL2 Antibody) at dilution 1/40, on the right is treated with synthetic peptide. (Original magnification: x200)