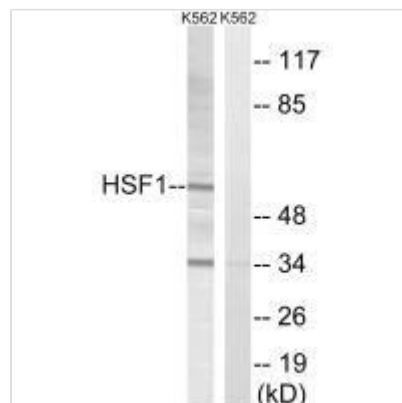




# HSF1 (Ab-142) Antibody

<b>Product Code</b>	CSB-PA268961
<b>Storage</b>	Upon receipt, store at -20°C or -80°C. Avoid repeated freeze.
<b>Uniprot No.</b>	Q00613
<b>Immunogen</b>	Synthesized non-phosphopeptide derived from Human HSF1 around the phosphorylation site of threonine 142 (L-L-T(p)-D-V).
<b>Raised In</b>	Rabbit
<b>Species Reactivity</b>	Human, Mouse
<b>Specificity</b>	The antibody detects endogenous levels of total HSF1 protein.
<b>Tested Applications</b>	ELISA, WB; WB: 1:500-1:3000
<b>Relevance</b>	<p>DNA-binding protein that specifically binds heat shock promoter elements (HSE) and activates transcription. In higher eukaryotes, HSF is unable to bind to the HSE unless the cells are heat shocked.</p> <p>Rabindran S.K., Proc. Natl. Acad. Sci. U.S.A. 88:6906-6910(1991).            Ota T., Nat. Genet. 36:40-45(2004).            Kalnine N., Submitted (MAY-2003) to the EMBL/GenBank/DDBJ databases.</p>
<b>Form</b>	Rabbit IgG in phosphate buffered saline (without Mg <sup>2+</sup> and Ca <sup>2+</sup> ), pH 7.4, 150mM NaCl, 0.02% sodium azide and 50% glycerol.
<b>Purification Method</b>	The antibody was affinity-purified from rabbit antiserum by affinity-chromatography using epitope-specific immunogen.
<b>Clonality</b>	Polyclonal
<b>Alias</b>	Heat shock factor protein 1; Heat shock transcription factor 1; HSF 1; HSTF 1; HSTF1
<b>Product Type</b>	Polyclonal Antibody
<b>Species</b>	Homo sapiens (Human)
<b>Target Names</b>	HSF1

## Image



Western blot analysis of extracts from K562 cells, using HSF1 (Ab-142) antibody.