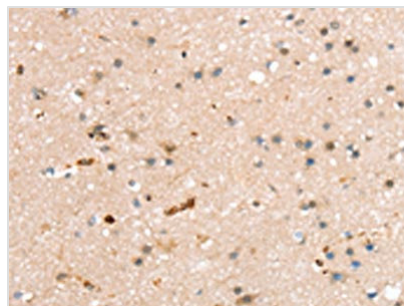




RASGEF1A Antibody

Product Code	CSB-PA255835
Storage	Upon receipt, store at -20°C or -80°C. Avoid repeated freeze.
Uniprot No.	Q8N9B8
Immunogen	Fusion protein of Human RASGEF1A
Raised In	Rabbit
Species Reactivity	Human
Tested Applications	ELISA,IHC;ELISA:1:1000-1:2000,IHC:1:10-1:50
Relevance	RASGEF1A (RasGEF domain family, member 1A) is a 481 amino acid guanine-nucleotide exchange factor (GEF) for H-Ras, K-Ras, and N-Ras. RASGEF1A may also play a role in cell migration. RASFEF1A is highly expressed in spinal chord and brain and contains one N-terminal Ras-GEF domain and one Ras-GEF domain. The gene that encodes RASGEF1A maps to human chromosome 10, which contains over 800 genes and 135 million nucleotides, making up nearly 4.5% of the human genome. PTEN is an important tumor suppressor gene located on chromosome 10 and, when defective, causes a genetic predisposition to cancer development known as Cowden syndrome.
Form	Liquid
Conjugate	Non-conjugated
Storage Buffer	-20°C, pH7.4 PBS, 0.05% NaN3, 40% Glycerol
Purification Method	Antigen affinity purification
Isotype	IgG
Species	Homo sapiens (Human)
Target Names	RASGEF1A

Image



The image on the left is immunohistochemistry of paraffin-embedded Human brain tissue using CSB-PA255835(RASGEF1A Antibody) at dilution 1/20, on the right is treated with fusion protein. (Original magnification: x200)