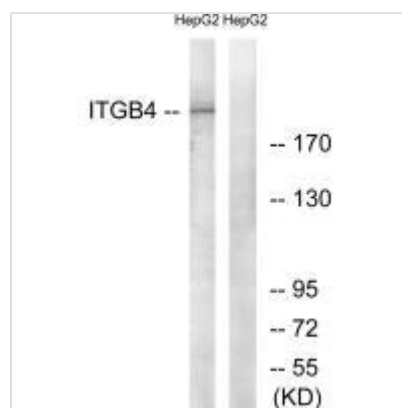




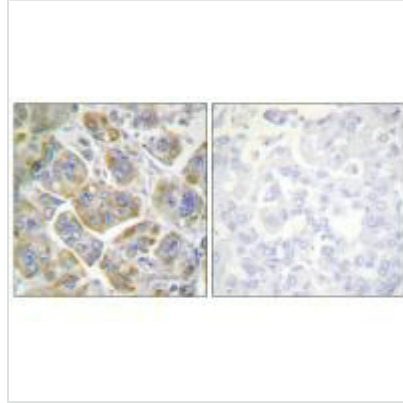
ITGB4 (Ab-1510) Antibody

Product Code	CSB-PA254864
Storage	Upon receipt, store at -20°C or -80°C. Avoid repeated freeze.
Uniprot No.	P16144
Immunogen	Synthesized non-phosphopeptide derived from Human ITGB4 around the phosphorylation site of tyrosine 1510 (R-D-Y(p)-S-T).
Raised In	Rabbit
Species Reactivity	Human,Mouse,Rat
Specificity	The antibody detects endogenous levels of total ITGB4 protein.
Tested Applications	ELISA,WB,IHC;WB:1:500-1:3000,IHC:1:50-1:100
Relevance	<p>Integrin alpha-6/beta-4 is a receptor for laminin. Plays a critical structural role in the hemidesmosome of epithelial cells. Is required for the regulation of keratinocyte polarity and motility.</p> <p>Suzuki S., EMBO J. 9:757-763(1990). Hogervorst F., EMBO J. 9:765-770(1990). Tamura R.N., J. Cell Biol. 111:1593-1604(1990).</p>
Form	Rabbit IgG in phosphate buffered saline (without Mg ²⁺ and Ca ²⁺), pH 7.4, 150mM NaCl, 0.02% sodium azide and 50% glycerol.
Purification Method	The antibody was affinity-purified from rabbit antiserum by affinity-chromatography using epitope-specific immunogen.
Clonality	Polyclonal
Alias	CD104 antigen; GP150; ITB4; integrin beta-4; integrin beta-4C
Product Type	Polyclonal Antibody
Species	Homo sapiens (Human)
Target Names	ITGB4

Image



Western blot analysis of extracts from HepG2 cells, treated with PMA (125ng/ml, 30mins), using ITGB4 (Ab-1510) antibody.



Immunohistochemistry analysis of paraffin-embedded human breast carcinoma tissue using ITGB4 (Ab-1510) antibody.