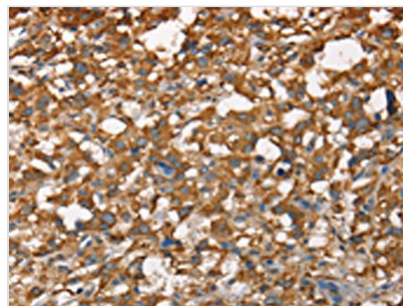




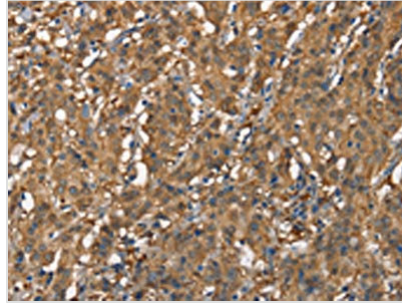
CDC25A Antibody

Product Code	CSB-PA244825
Storage	Upon receipt, store at -20°C or -80°C. Avoid repeated freeze.
Uniprot No.	P30304
Immunogen	Synthetic peptide of Human CDC25A
Raised In	Rabbit
Species Reactivity	Human,Mouse,Rat
Tested Applications	ELISA,IHC;ELISA:1:2000-1:10000,IHC:1:100-1:300
Relevance	CDC25A is a member of the CDC25 family of phosphatases. CDC25A is required for progression from G1 to the S phase of the cell cycle. It activates the cyclin-dependent kinase CDC2 by removing two phosphate groups. CDC25A is specifically degraded in response to DNA damage, which prevents cells with chromosomal abnormalities from progressing through cell division. CDC25A is an oncogene, although its exact role in oncogenesis has not been demonstrated. Two transcript variants encoding different isoforms have been found for this gene.
Form	Liquid
Conjugate	Non-conjugated
Storage Buffer	-20°C, pH7.4 PBS, 0.05% NaN3, 40% Glycerol
Purification Method	Antigen affinity purification
Isotype	IgG
Species	Homo sapiens (Human)
Target Names	CDC25A

Image



The image on the left is immunohistochemistry of paraffin-embedded Human thyroid cancer tissue using CSB-PA244825(CDC25A Antibody) at dilution 1/60, on the right is treated with synthetic peptide. (Original magnification: x200)



The image on the left is immunohistochemistry of paraffin-embedded Human gastric cancer tissue using CSB-PA244825(CDC25A Antibody) at dilution 1/60, on the right is treated with synthetic peptide. (Original magnification: x200)