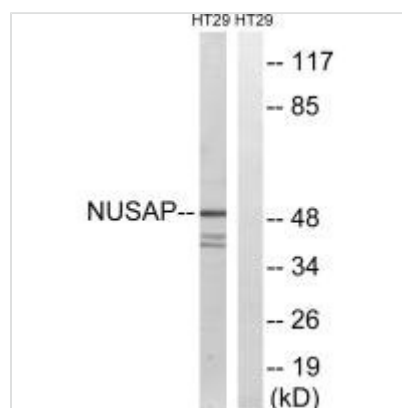




# NUSAP1 Antibody

<b>Product Code</b>	CSB-PA222749
<b>Storage</b>	Upon receipt, store at -20°C or -80°C. Avoid repeated freeze.
<b>Uniprot No.</b>	Q9BXS6
<b>Immunogen</b>	Synthesized peptide derived from internal of Human NUSAP1.
<b>Raised In</b>	Rabbit
<b>Species Reactivity</b>	Human
<b>Specificity</b>	The antibody detects endogenous levels of total NUSAP1 protein.
<b>Tested Applications</b>	ELISA,WB;WB:1:500-1:3000
<b>Relevance</b>	<p>Microtubule-associated protein with the capacity to bundle and stabilize microtubules By similarity. May associate with chromosomes and promote the organization of mitotic spindle microtubules around them.</p> <p>Qu X., Submitted (JUL-2000) to the EMBL/GenBank/DDBJ databases.            Sato H., Submitted (OCT-2000) to the EMBL/GenBank/DDBJ databases.            Yu Y., Genome Res. 11:1392-1403(2001)</p>
<b>Form</b>	Rabbit IgG in phosphate buffered saline (without Mg <sup>2+</sup> and Ca <sup>2+</sup> ), pH 7.4, 150mM NaCl, 0.02% sodium azide and 50% glycerol.
<b>Purification Method</b>	The antibody was affinity-purified from rabbit antiserum by affinity-chromatography using epitope-specific immunogen.
<b>Clonality</b>	Polyclonal
<b>Alias</b>	ANKT; BM037; LNP; nucleolar and spindle associated protein 1; nucleolar protein ANKT
<b>Product Type</b>	Polyclonal Antibody
<b>Species</b>	Homo sapiens (Human)
<b>Target Names</b>	NUSAP1

## Image



Western blot analysis of extracts from HT-29 cells, using NUSAP1 antibody.